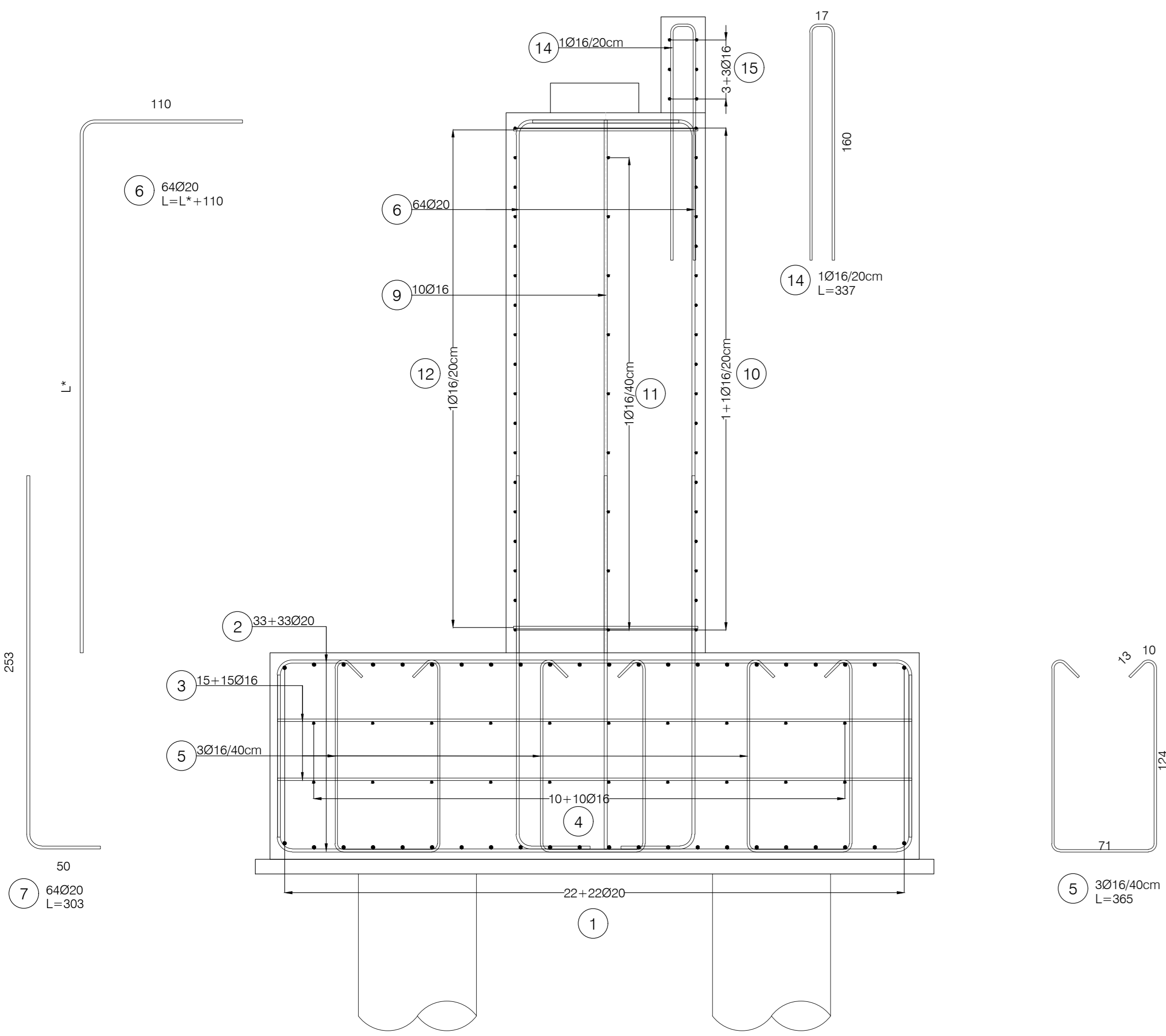
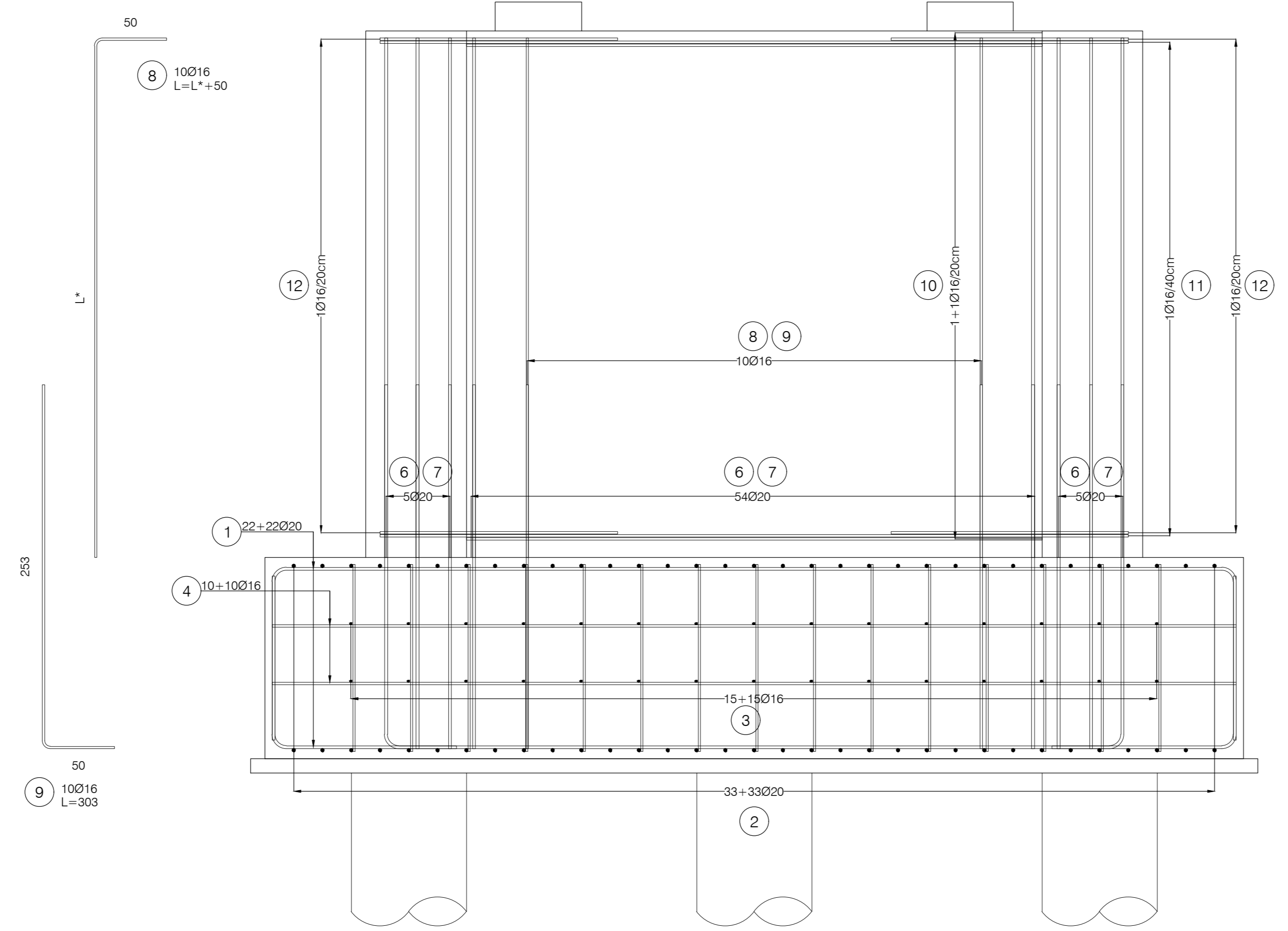


Sezione A-A - Armatura
SCALA 1:25

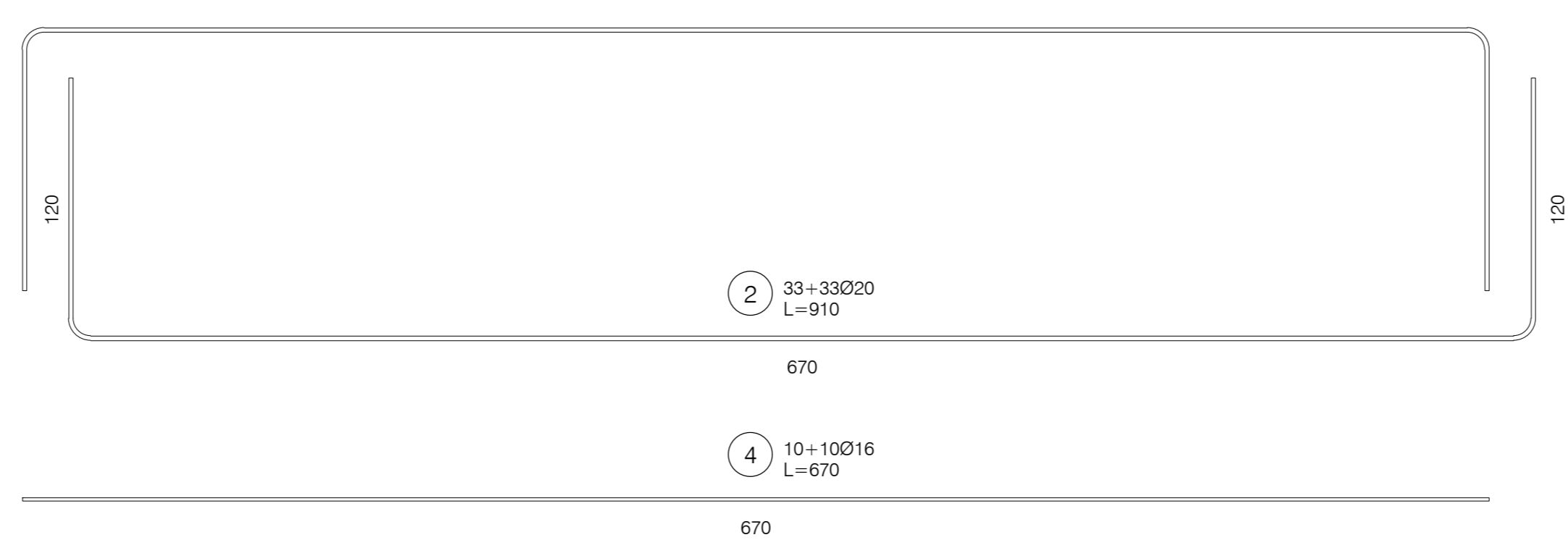
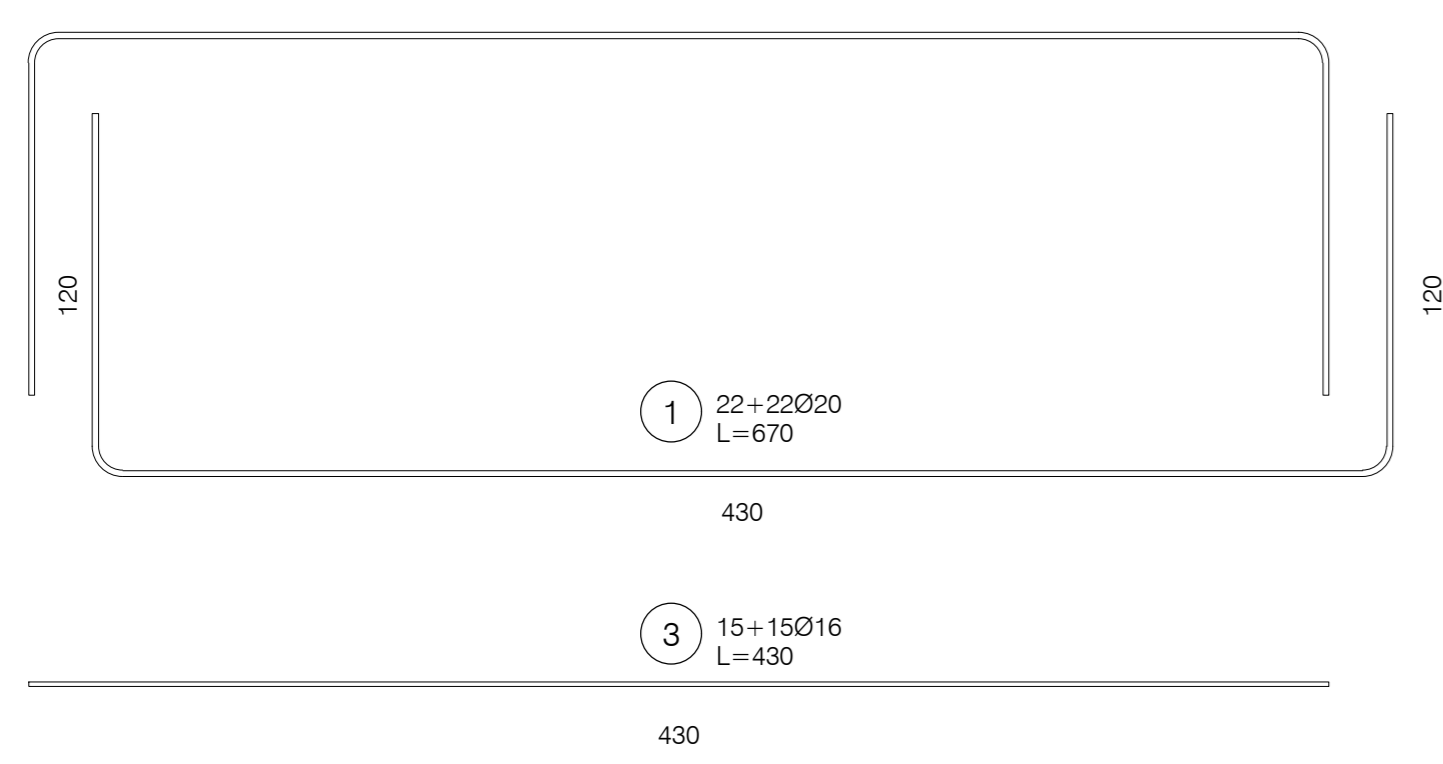
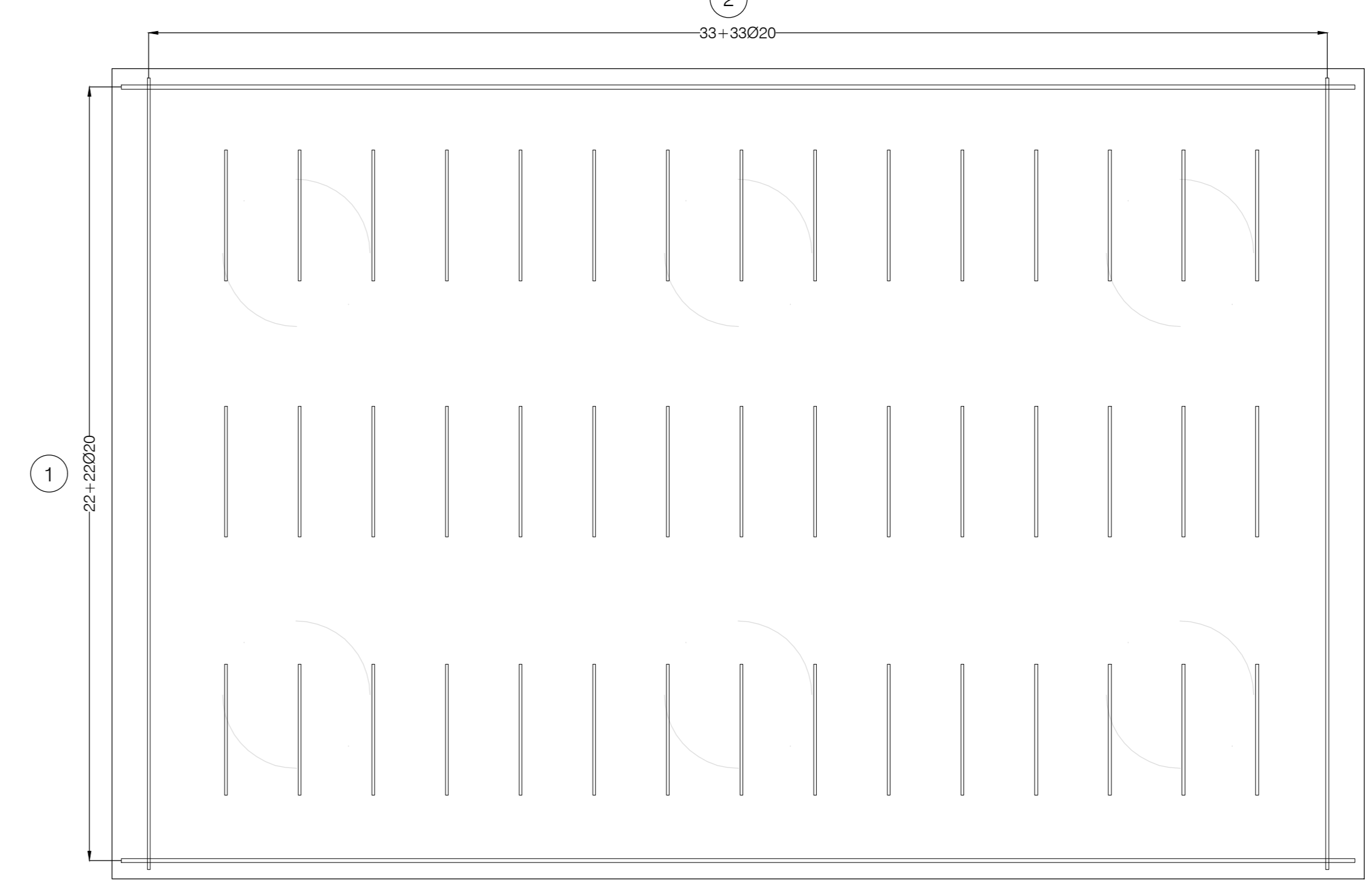


Sezione B-B - Armatura
SCALA 1:25

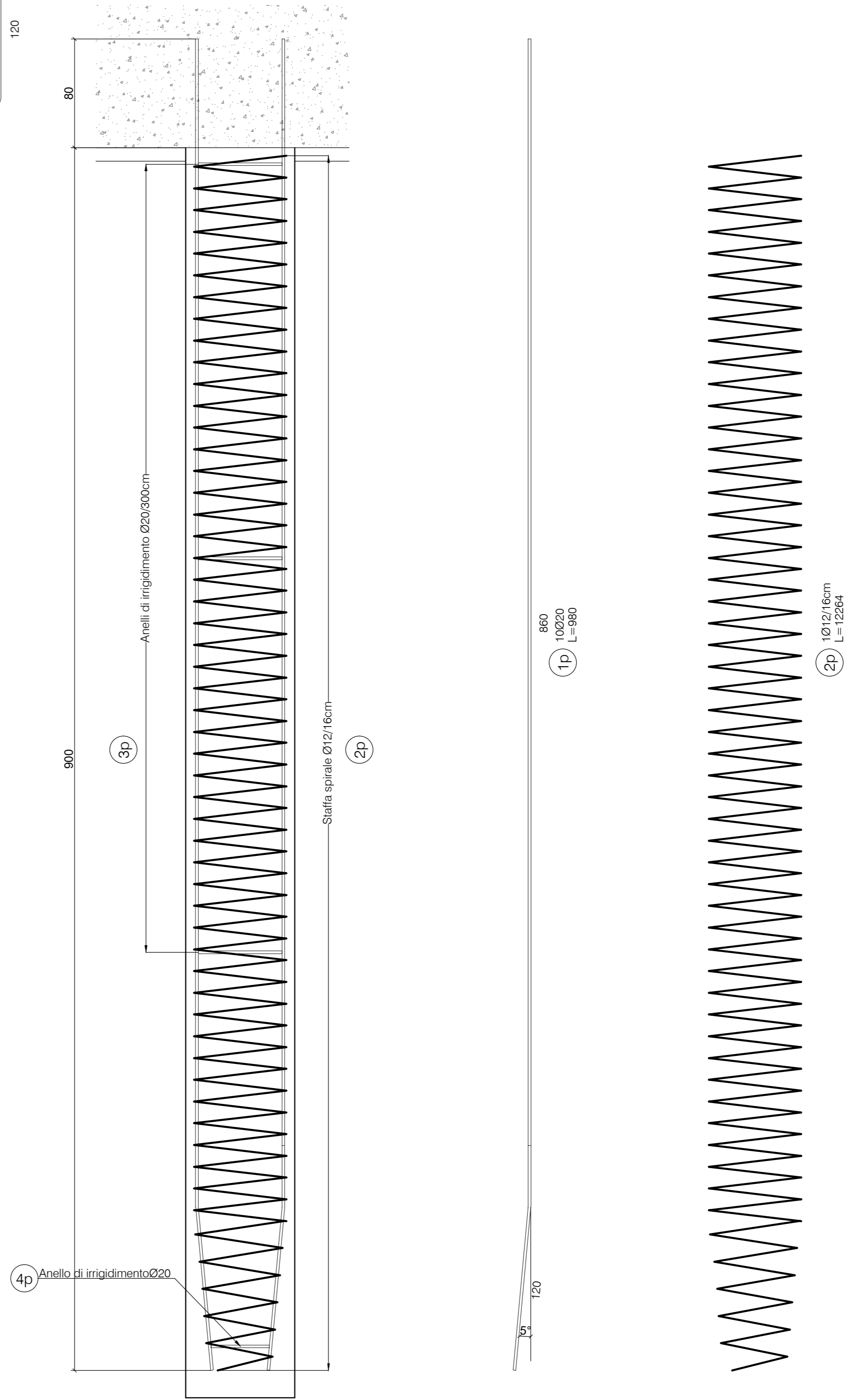


ALTEZZA PILE	
Nr	L* (cm)
PILA 1	361
PILA 2	288

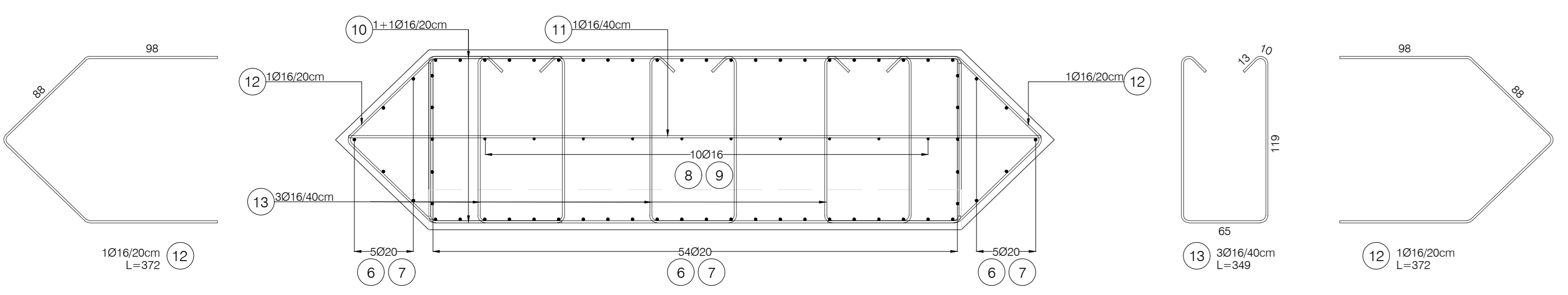
Pianta fondazione - Armatura
SCALA 1:25



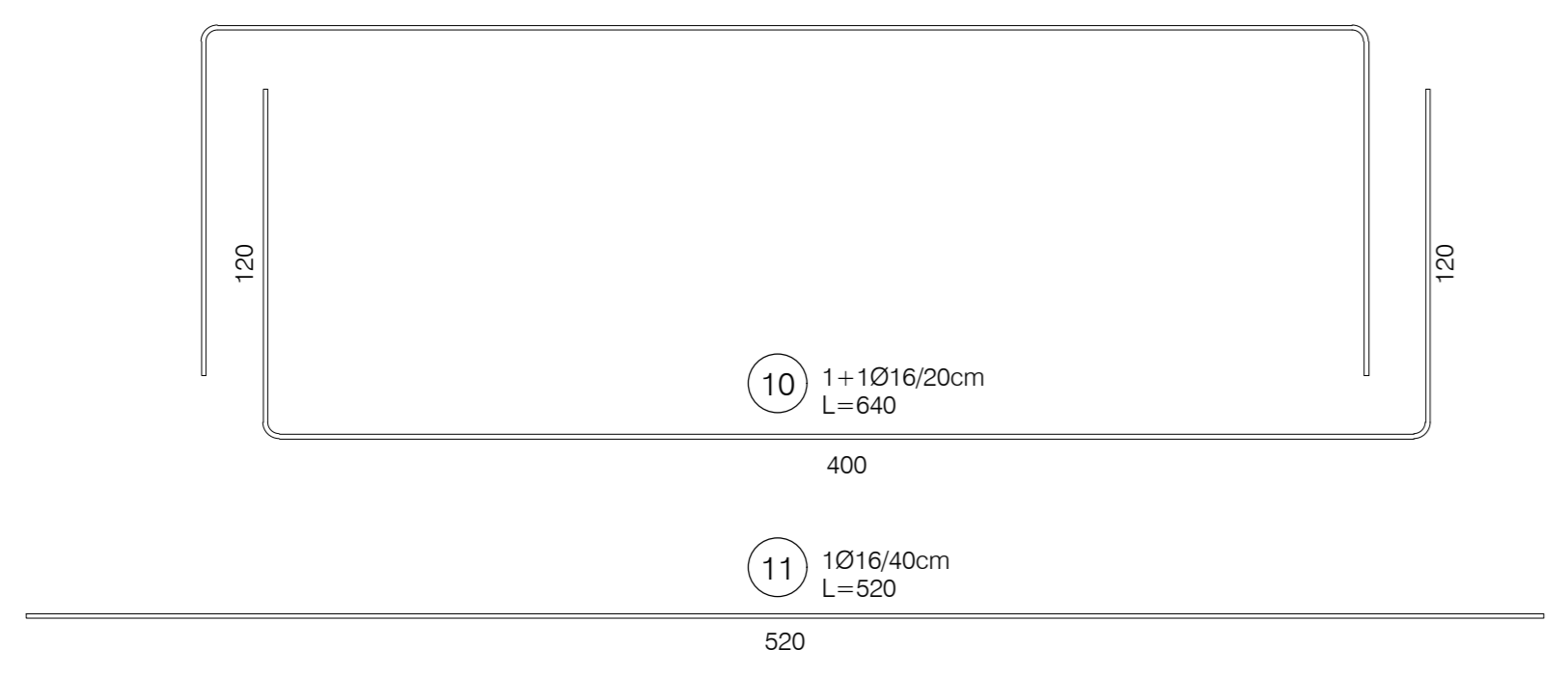
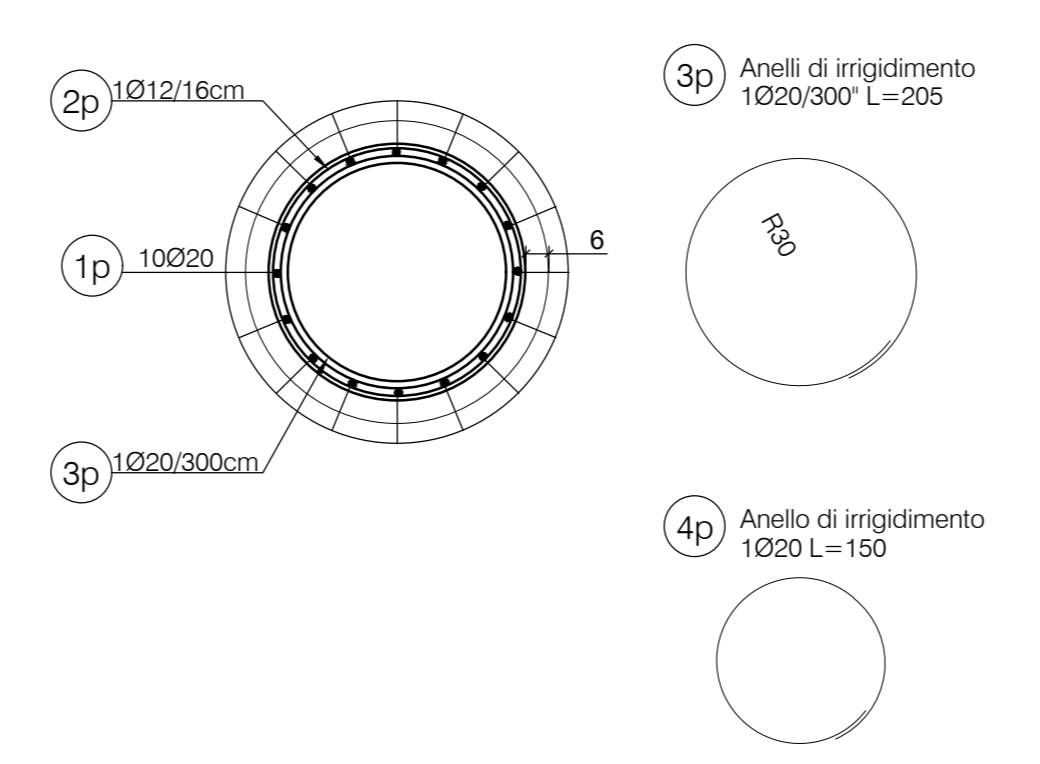
Armatura pali
SCALA 1:25



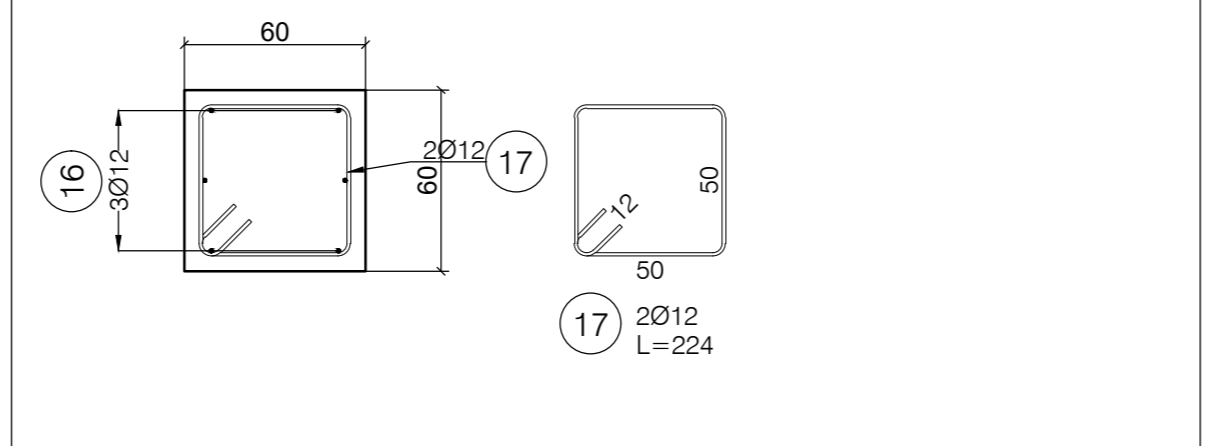
Pianta elevazione - Armatura
SCALA 1:25



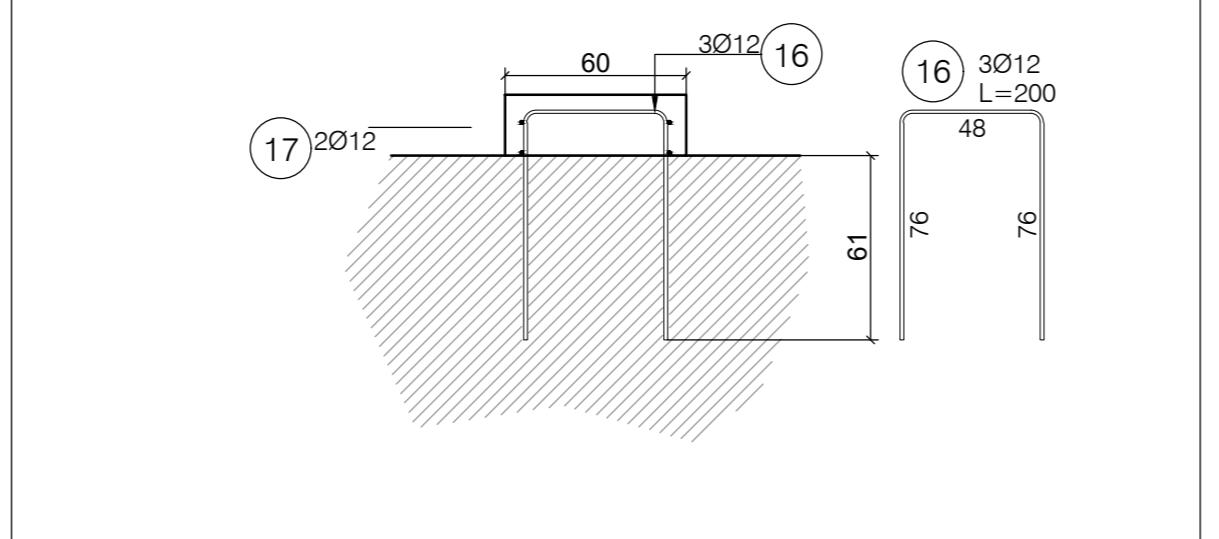
Sezione A-A
SCALA 1:20



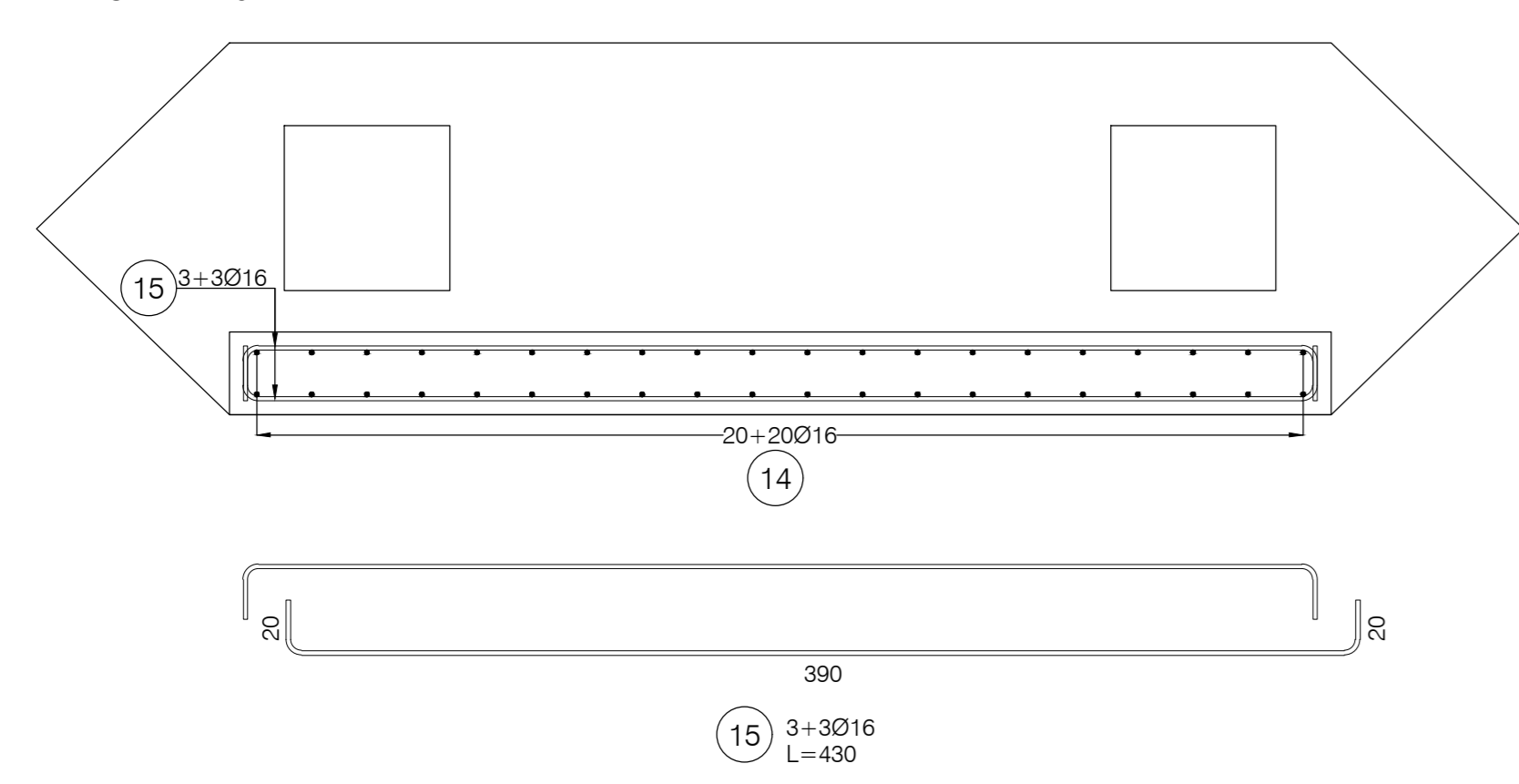
Armatura baggioni
Pianta
SCALA 1:25



Armatura baggioni
Sezione
SCALA 1:25



Pianta parete - Armatura
SCALA 1:25



Ciclovia del Sole: tratto 3 attraversamento dei centri abitati di Crevalcore, San Giovanni in Persiceto, Sala Bolognese - tratto 4: Casalecchio - Marzabotto
CUP n° C61B21013060002

PROGETTO DEFINITIVO

Coordinamento e integrazione delle prestazioni specialistiche:
arch. Enrico Guastoni Panerl

Il Responsabile Unico del Procedimento:
ing. Maurizio Martelli

Progettazione ciclabile e paesaggistica:
arch. Irene Esposto, paes. Giulia Mazzari, arch. Eleonora Vaccari,
arch. Michela Gessani, dott. paes. Sara Martignoni, arch. Alberto Coppi

Supporto al RUP:
ing. Chiara Ferrarini
arch. Federica Sodano
ing. Sara Destro
dott. ssa Silvia Mazza
arch. Giulia Maroni

Progettazione delle strutture:
prof. ing. Massimo Majowiecki, ing. sr. Giovanni Berti,
ing. jr. Monica Mingozzi, ing. jr. Elisa Sammarco

Geologia, Ambiente, Idraulica:
geol. Pierluigi Dallari, geol. Arianna Casarini, geol. Lisa Gasparini,
geol. Emiliano Quadernari, ing. Yos Zorzi

Coordinamento della sicurezza:
ing. Fausto Gallarelli, ing. Roberto Perlangeli

**PASSERELLA RIO VERDE - SASSO MARCONI
ARMATURA SPALLE**

N. REV.	DATA	DESCRIZIONE	DISIGNATO	CONTROLLATO	APPROVATO
R_00	30/11/23	EMISSIONE	G. Falconi	M. Chini	M. Majowiecki

SCALA 1:25
FORMATO A0
DATA 30/11/2023
CODICE STR_2_7

FABRE ASSOCIATI | MJW structures | GEOGROUP | Galileo ingegneria