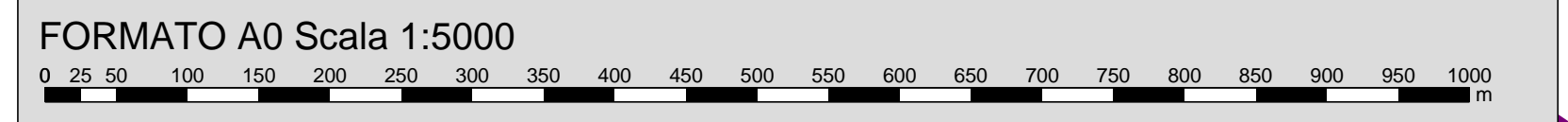
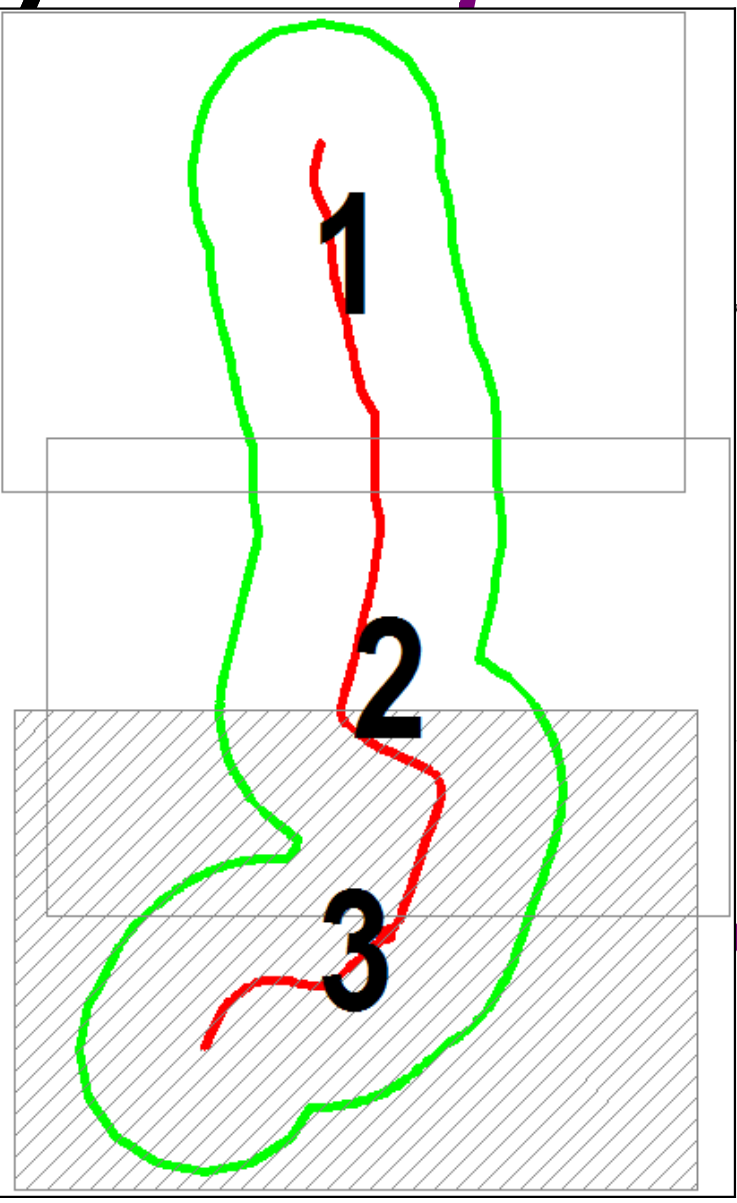
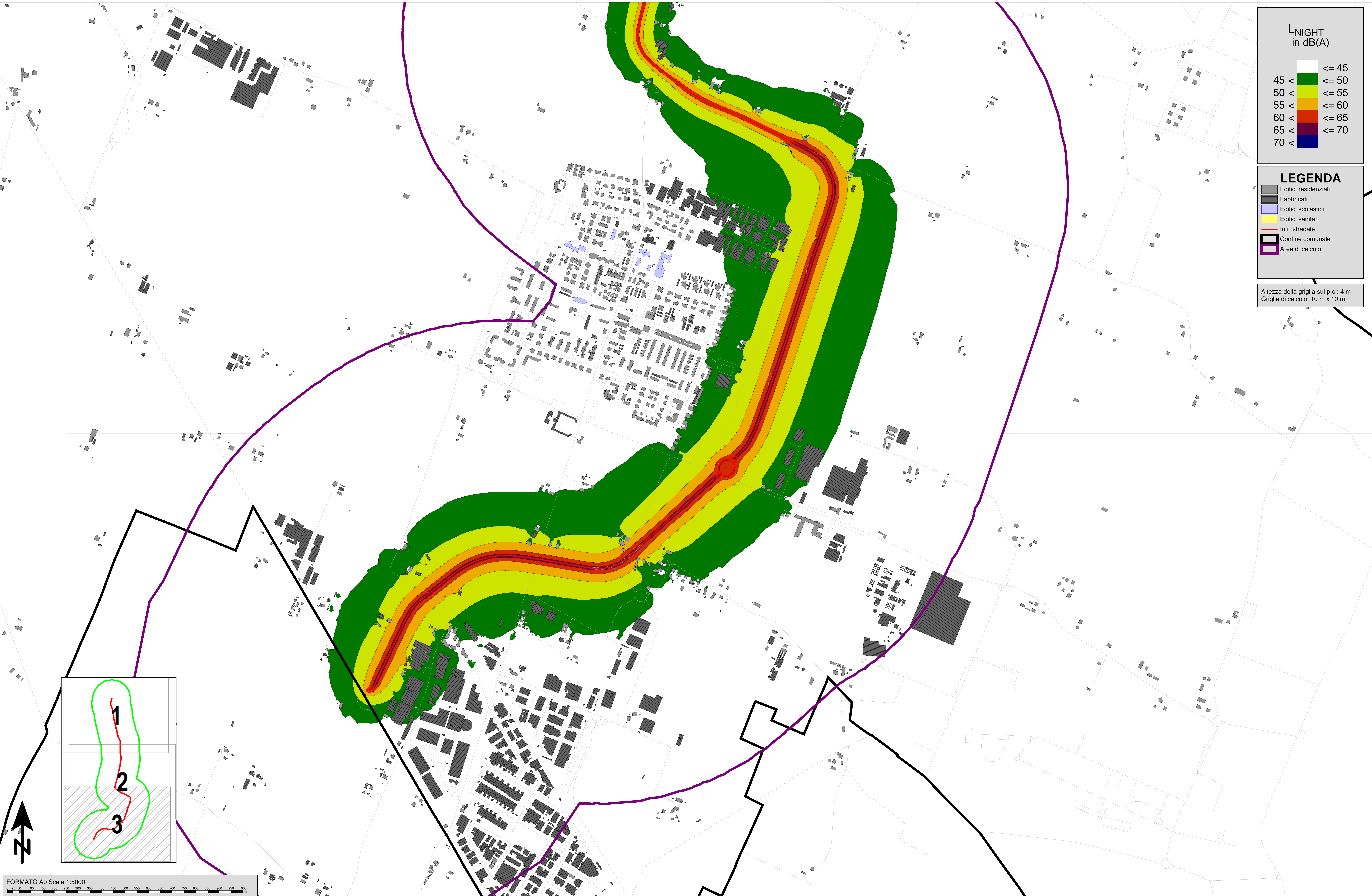
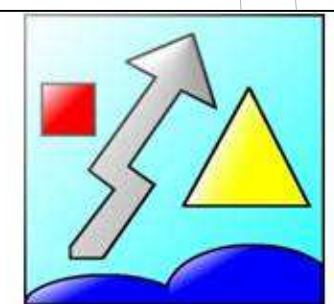


Altezza della griglia sul p.c.: 4 m
Griglia di calcolo: 10 m x 10 m



Piano d'Azione delle strade principali (strade con volumi di traffico superiori a 3.000.000 veic/anno) in applicazione della Direttiva 2002/49/CE

IT_a_rd0062005_MappeAcustiche_LNIGHT - Tav. 3/3 (SP18 Padullese)



VIE EN.RO.SE. Ingegneria S.r.l.