

THE NEW ENERGY LABELS: FOR A GREENER AND MORE EFFICIENT EUROPE

In all EU countries, a new energy labelling system was introduced and was progressively rolled out to 9 product categories.



BOOST ENERGY LABEL TAKE UP

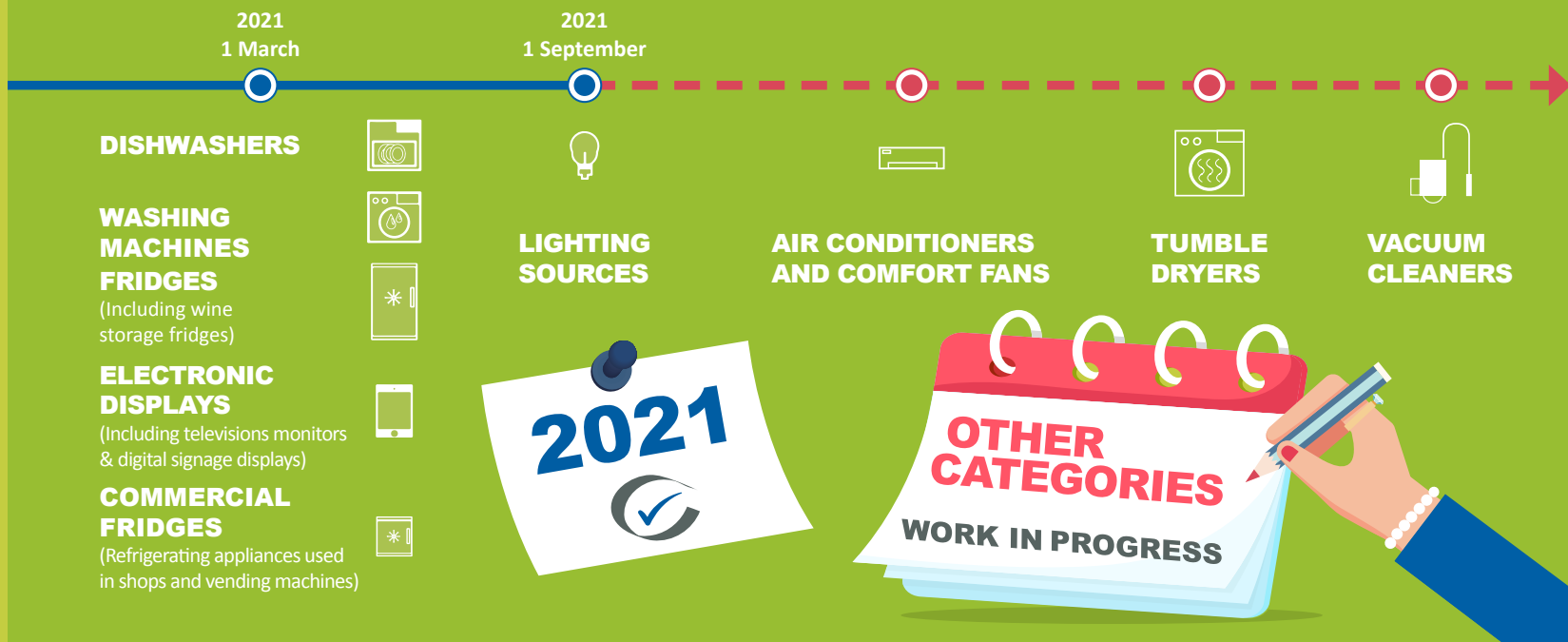
www.belt-project.eu



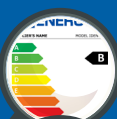
This project has received funding from the European Union's Horizon 2020 research and innovation program under grant agreement No 847043. The information reported in this document reflects only the author's view and the European Commission is not responsible for any use that may be made of the information it contains.

THE PRODUCT CATEGORIES

How much energy do the different products consume? How to save money? Find out with the calculator: www.belt-project.eu/belt



BEFORE AND AFTER: THE NEW LABEL LOOK



A new energy scale (A-G)



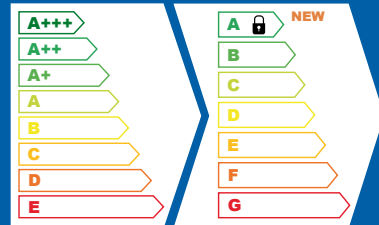
Specific energy consumption for each product category



Symbols with characteristics and performances



A QR code referring to additional technical information (dimensions, compartments, volumes)



DOs AND DON'Ts

- Do not buy a product based on the cheapest price
- Take into consideration the cost of the entire life cycle!
- Don't limit yourself ONLY to visible data
- By scanning the QR code you will be able to access EPREL, the EU database containing additional technical information
- Do not compare the new energy classes with the old ones
- It is unlikely that you will be able to find A-class appliance on the market at present: the formulas, parameters and ranges of values that determine the energy class are different now.

WHICH CLASSES ARE AVAILABLE AT THE MOMENT FOR EACH PRODUCT?

- Energy classes already available on the market
- Energy classes not yet available on the market
- Energy classes with limited availability on the market

The table shows situation at November 2021. It could change over time and depending on the country.

	A	B	C	D	E	F	G
DISHWASHERS	✓	✓	✓	✓	✓	✓	✓
WASHING MACHINES	✓	✓	✓	✓	✓	✓	✓
FRIDGES	✓	✓	✓	✓	✓	✓	✓
TV				✓	✓	✓	✓
LIGHTING SOURCES	✓	✓	✓	✓	✓	✓	✓

TOOLS AND INFORMATION AT YOUR DISPOSAL

- Infographics
- Factsheets
- Guidelines
- White Paper
- Video
- LinkedIn

You can find all on: www.cittametropolitana.bo.it/progetti_europei/Belt_project_ita

STILL HAVING DOUBTS?

Compare products with the **Efficiency check web-app** (in collaboration with Label2020) <https://tool.label2020.eu/>

