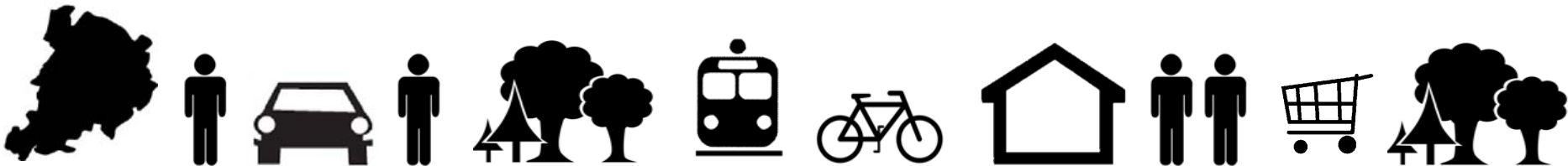


# Case study for MED

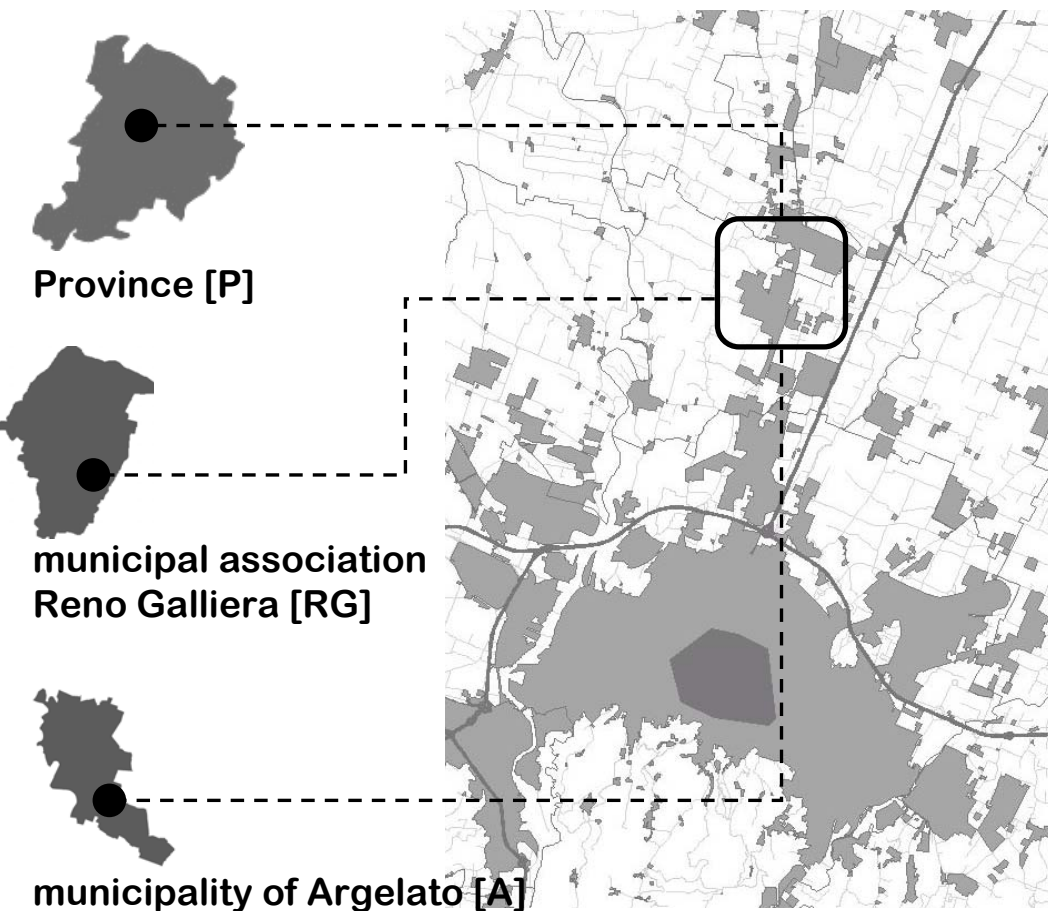
from large  
scale to urban  
project?

[FUNO]

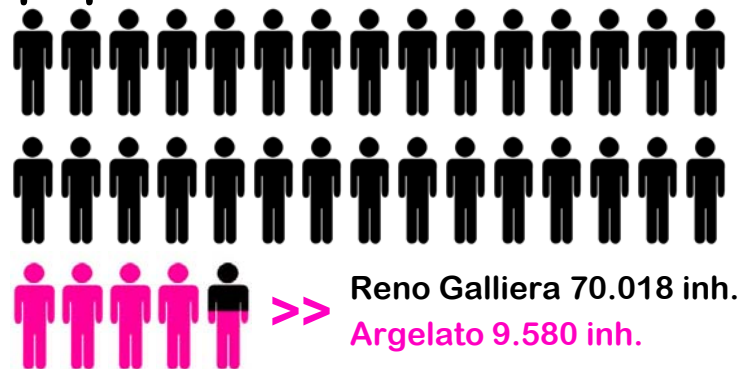
from complex junction  
to new metropolitan facility pole



# Territorial data



## population



## urbanized area



## TREND



# Bologna northern area\_the urbanisation



88.625.399 mq  
1981

140.824.382 mq  
1991

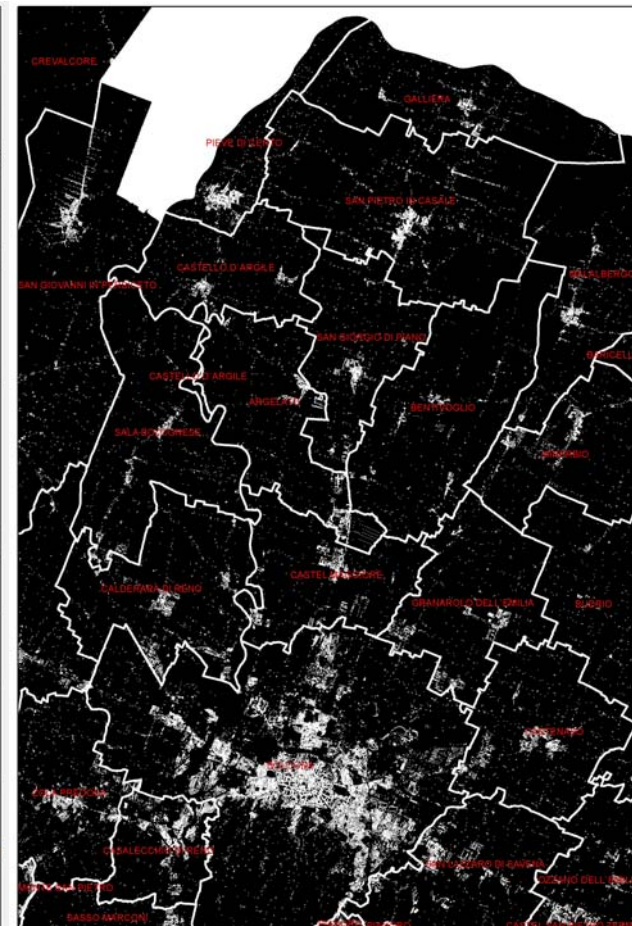
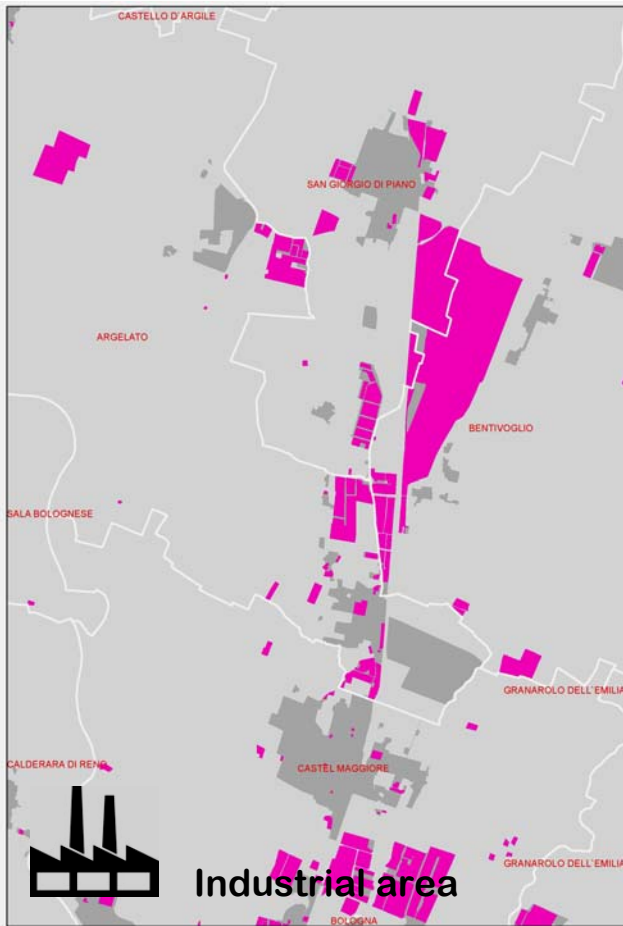
164.558.870 mq  
2000



+ 86% ultimi 20 anni



# Bologna northern area\_the industrial area & sprawl



**SPRAWL TODAY**

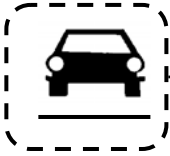
# FUNO \_ from complex junction to new metropolitan facility pole



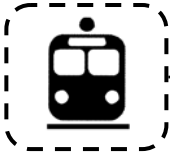
The Bologna Freight Village  
(logistics infrastructures)



New northern motorway bypass



New urban motorway



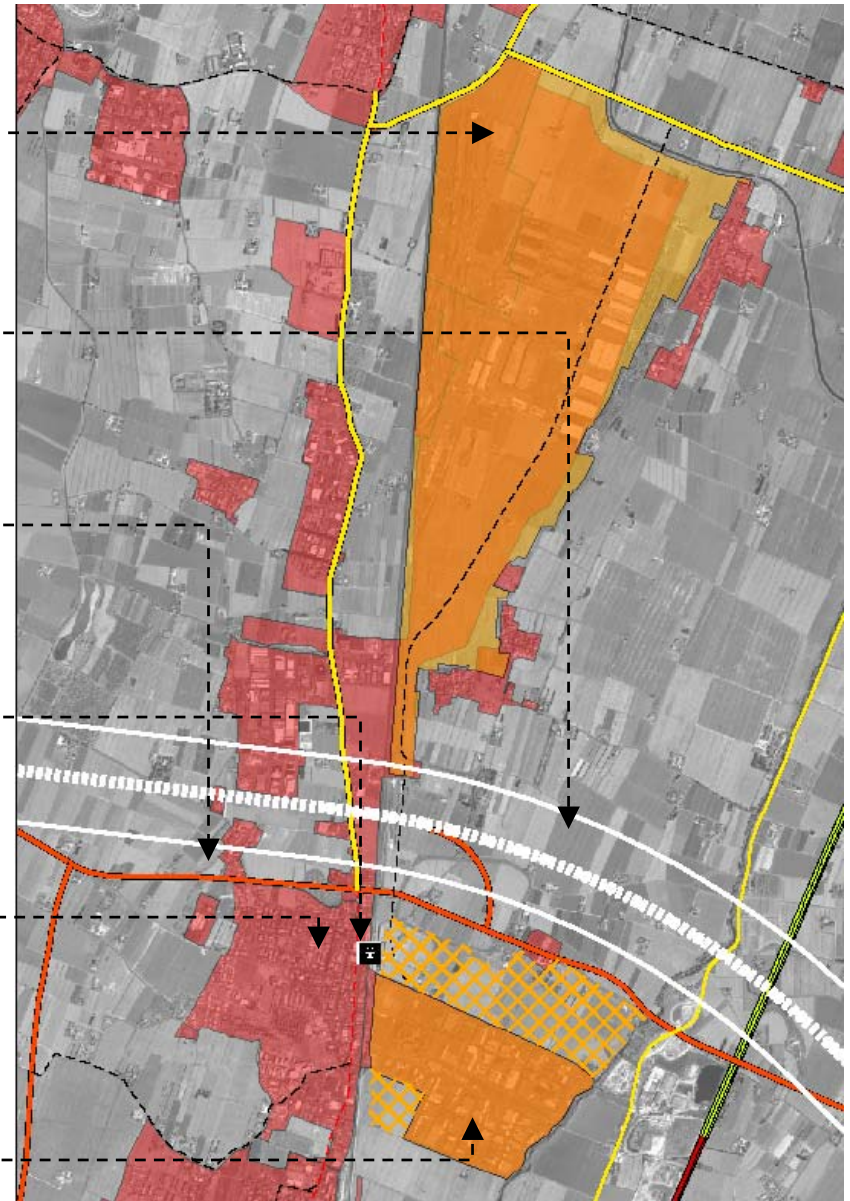
Metropolitan railway station



Urban community



Fashion district “centergross”





# Ecological network

 Ecological complex area

 Ecological simple area

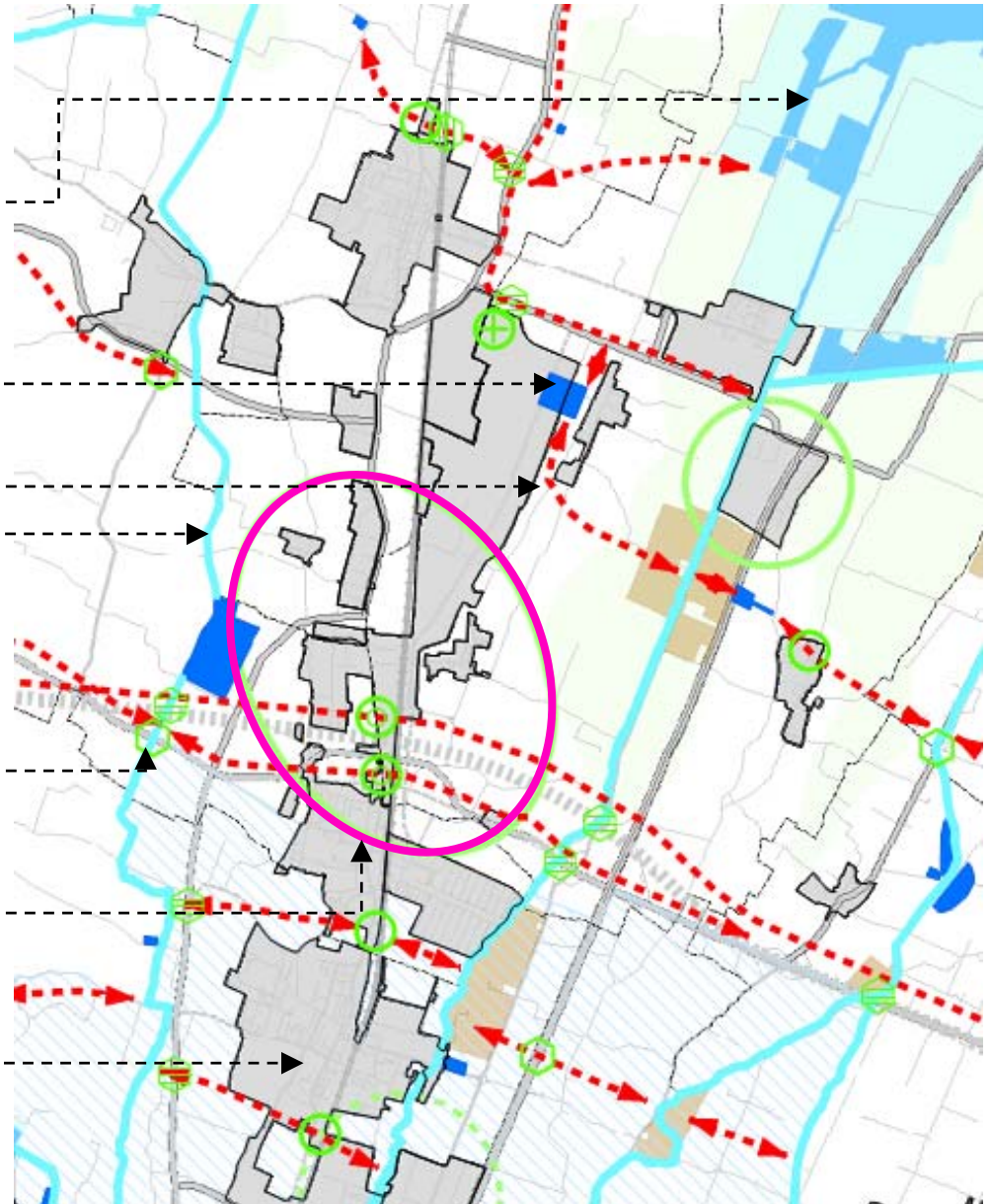
 Direction to link ecological areas

 River

 Interference natural/urban areas

 New facilities pole

 Urbanized area





**Urban texture**





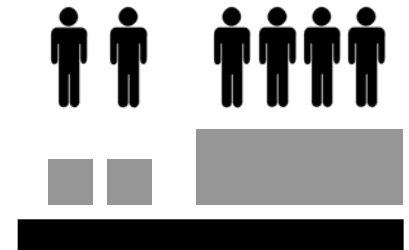
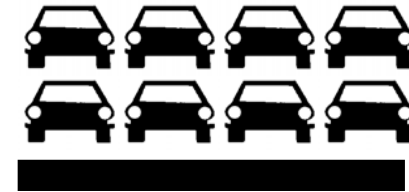
**Funno's railway station**



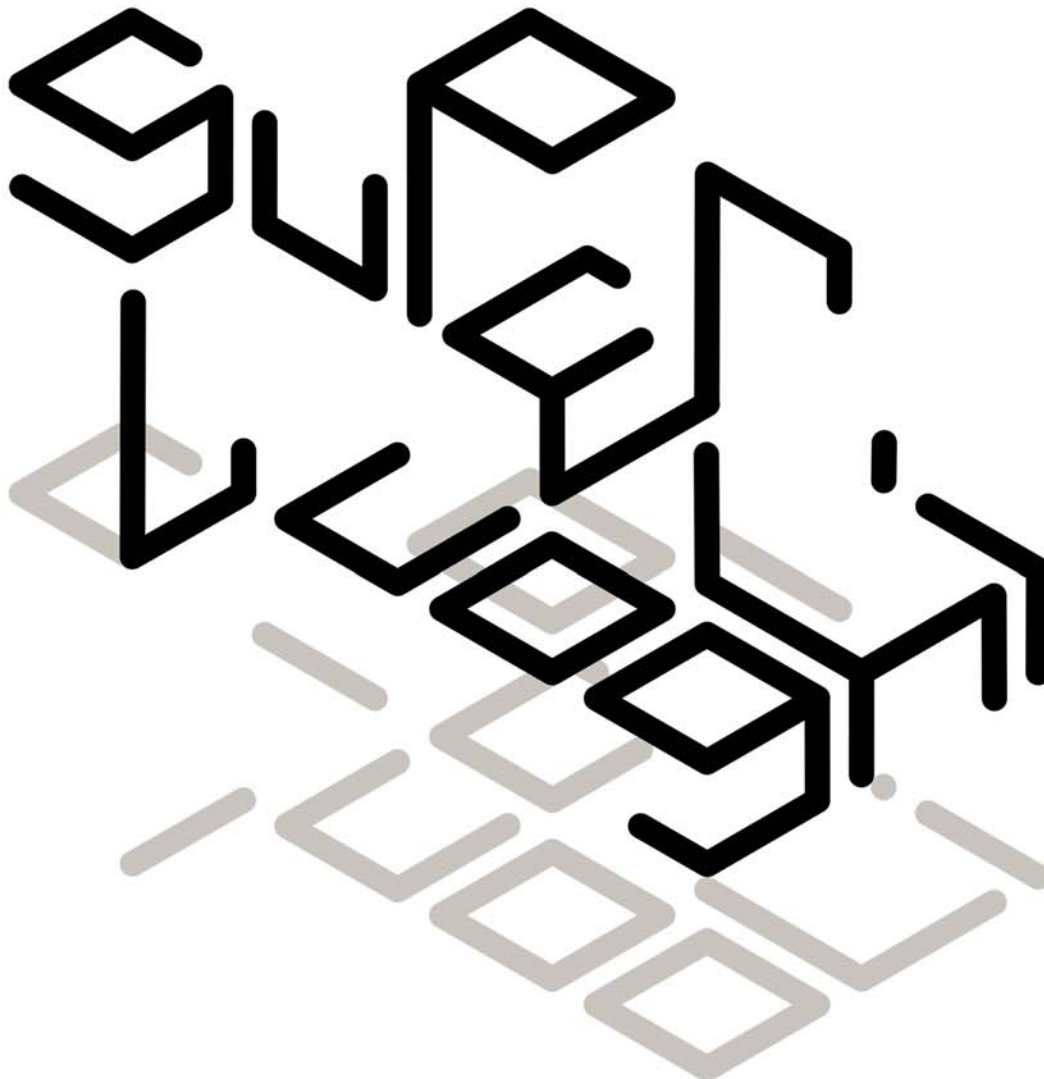


**Production areas  
interporto & Centergross**

# Landscape VS urbanscape [..mobilityscape]



# Study metropolitan's characters



Provincia di Bologna  
in collaborazione con  
Comune di Bologna  
Urban Center Bologna  
con il patrocinio di  
Presidenza del  
Consiglio dei Ministri  
Regione Emilia-Romagna  
Ordine degli Architetti  
di Bologna  
INU-Istituto Nazionale  
di Urbanistica

## la civiltà dei superluoghi

outlet\_aeroporti\_stazioni centri commerciali  
notizie dalla metropoli quotidiana

bologna

13 ottobre

7 novembre 2007

dialoghi  
incontri  
proiezioni  
spettacoli





**PLACE → identity + relations + historical**



**NON-PLACE → solitude, disidentification, anonymity**



# NON-PLACE





# A project for a large scale land

## Project hypothesis [key words]

integration

sustainability

quality

Cities

participation

functional mix



## Targets

Achieving an integrate settlement with the inhabited area of Funo and the train station SFM;

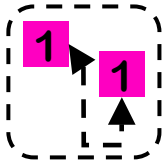
Minimize monofunctional zoning

Consider the public spaces as ordering elements

Preserve and enhance the rural and suburban landscape

Assess the possible inclusion of residual tertiary functions  
Interport

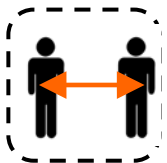
# A project for a large scale land



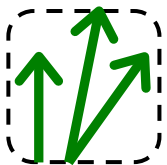
1 Integration between different functions



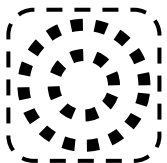
2 Sustainability & quality of settlements



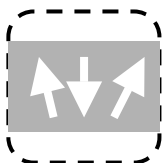
3 Integration between current and new inhabitants



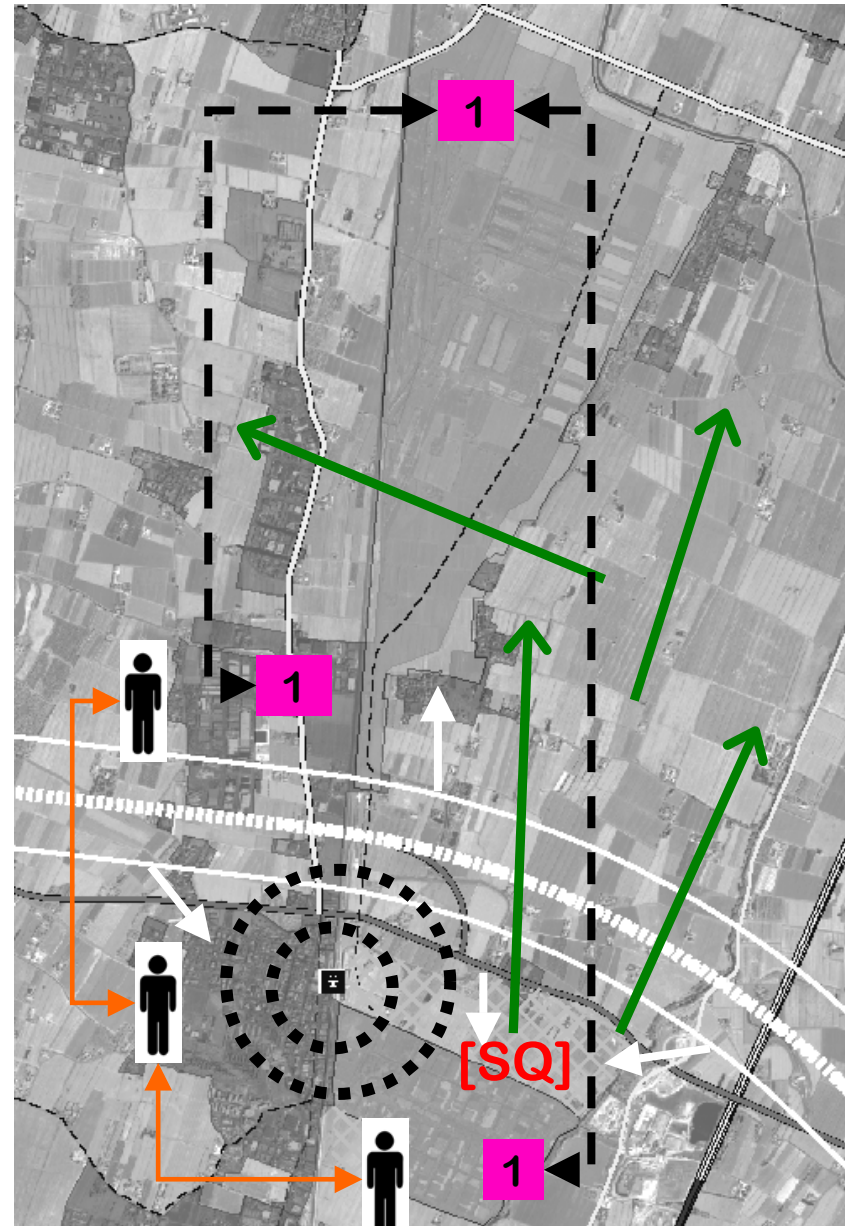
4 Relationship between rural and urbanized areas



5 Relationship and integration of new settlement with railway station

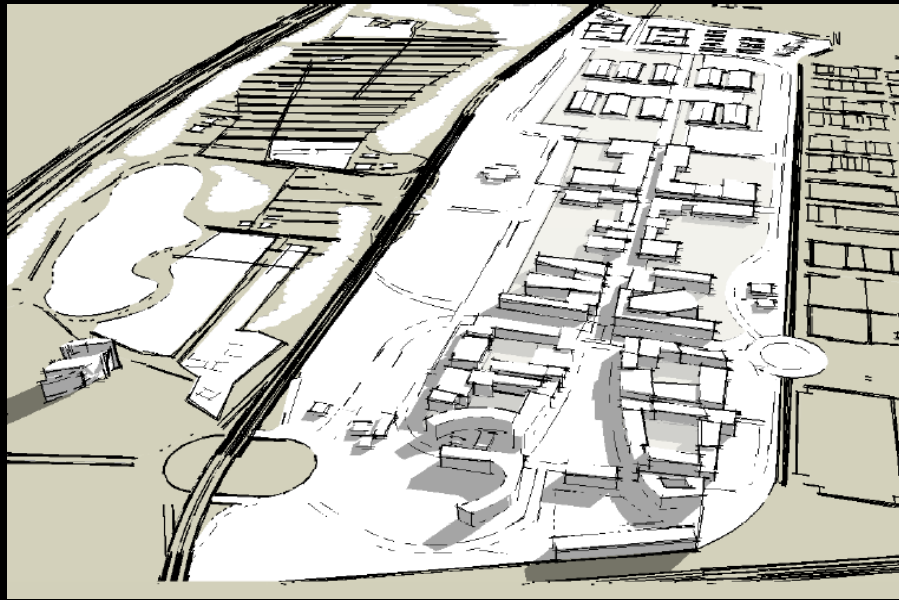
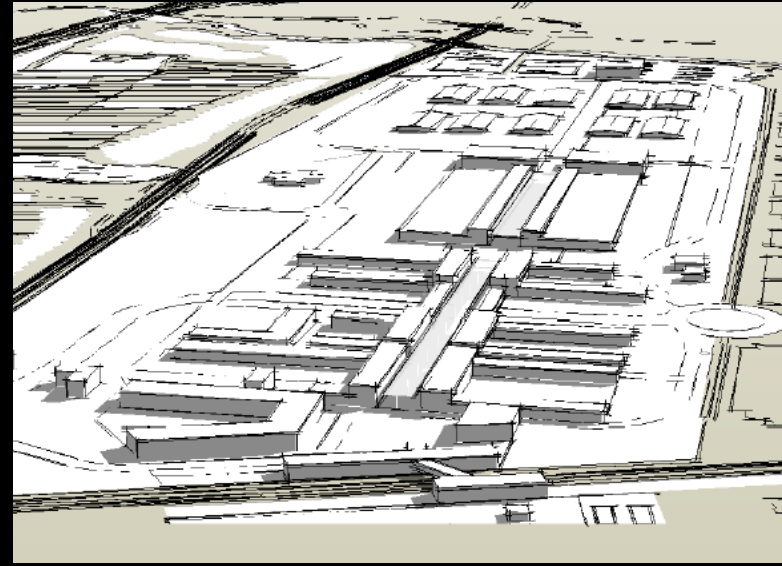


6 Relationship between settlements and infrastructures





# MASTERPLAN





**The end  
see you in Bologna!**