

**AFTER URBAN EXPLOSION**

**Group:**  
**QUARTO INFERIORE**

Faculty of Architecture Skopje



**AFTER URBAN EXPLOSION**  
**territory of interest**





# SPRAWL INTERIORS

photographic survey



# SPRAWL INTERIORS

photographic survey





# SPRAWL INTERIORS

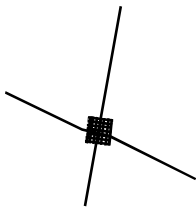
photographic survey



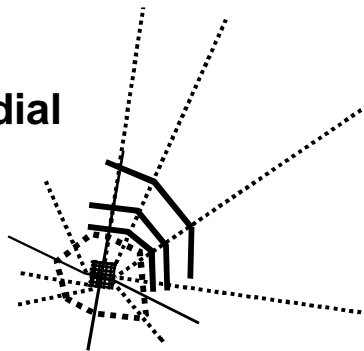




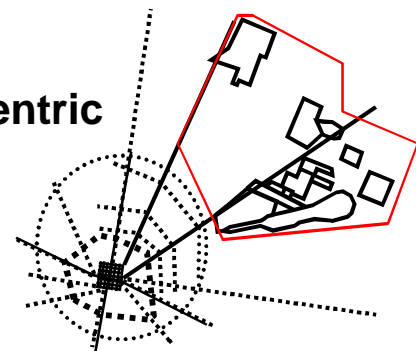
orthogonal



radial



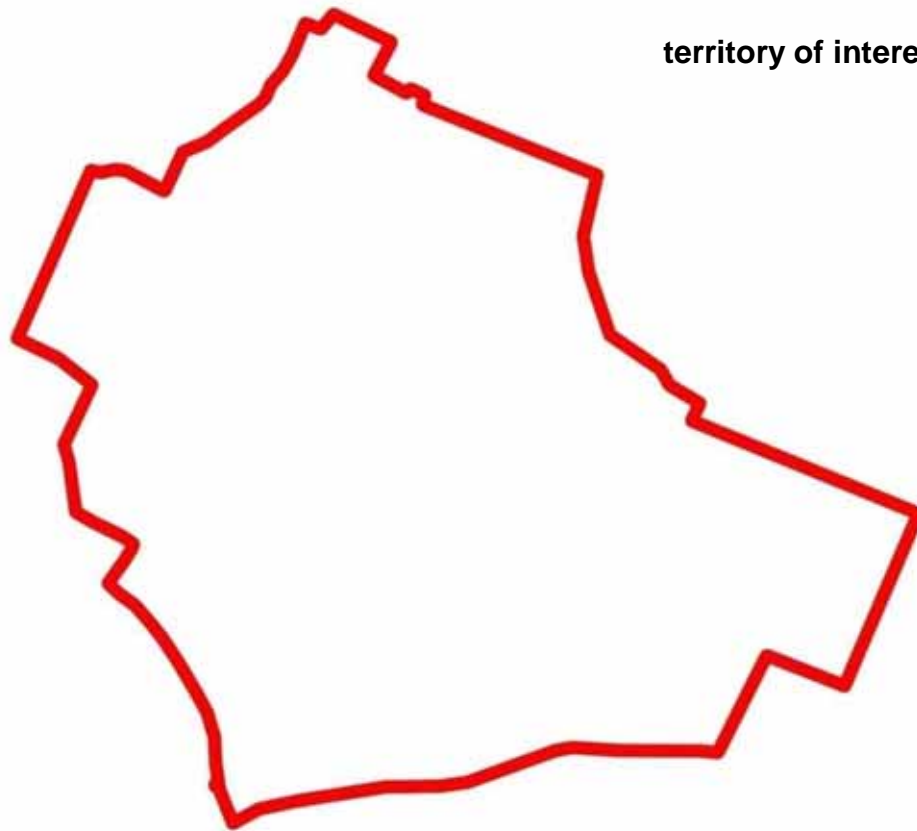
polycentric



**BOLOGNA**  
high density core



territory of interest



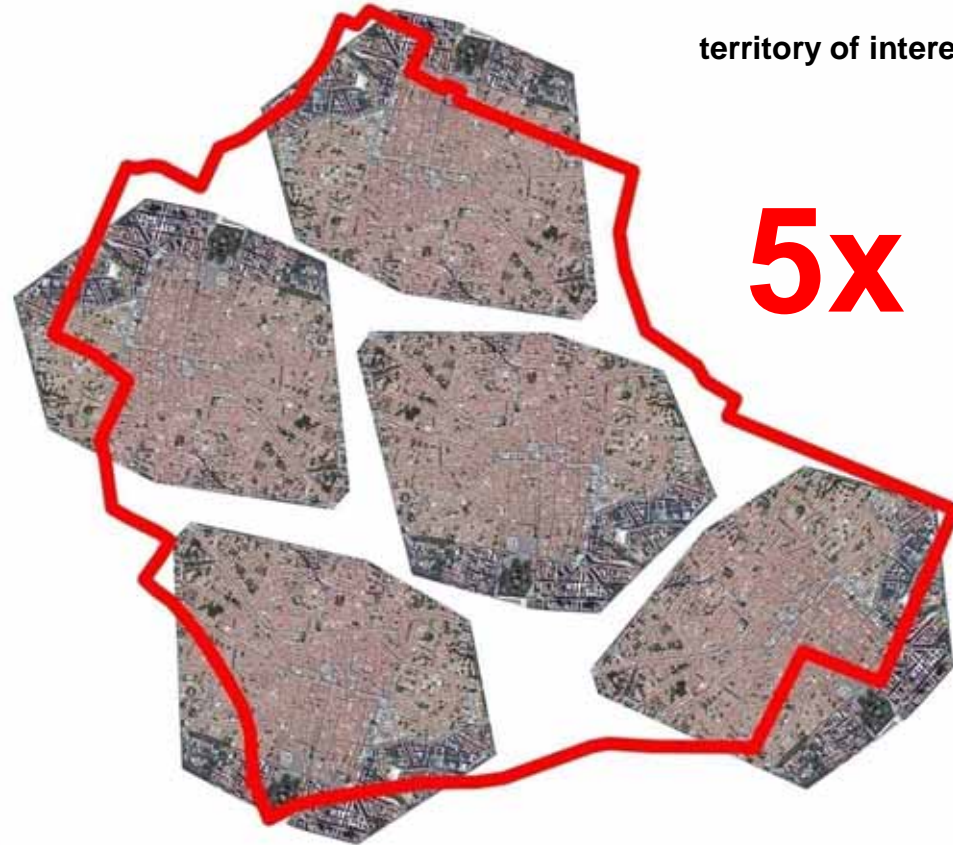
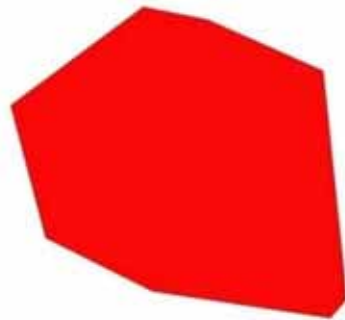


bigness

territory of interest

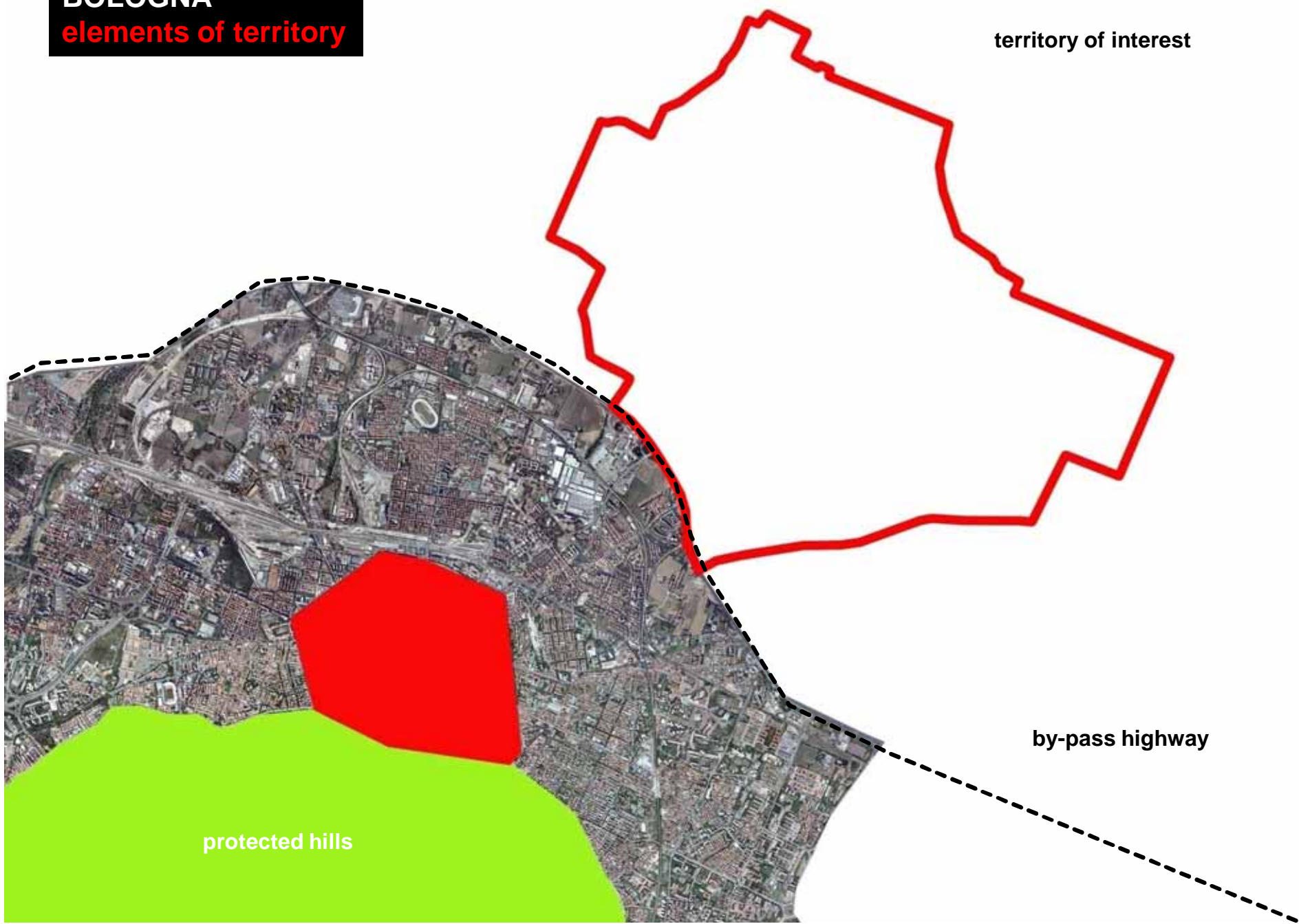
**5x**

**BOLOGNA**  
high density core





**BOLOGNA**  
elements of territory



territory of interest

by-pass highway

protected hills

**BOLOGNA**  
elements of territory

collection of sprawl  
FRAGMENTS



protected hills



**Q:**

**HOW SPRAWL CAN BE  
COMPACTED?**

**HOW TO DENSIFY SUBURBIA?  
HOW TO CONSTRUCT PUBLIC SPACE?  
HOW TO PRESERVE GREEN AREAS?**

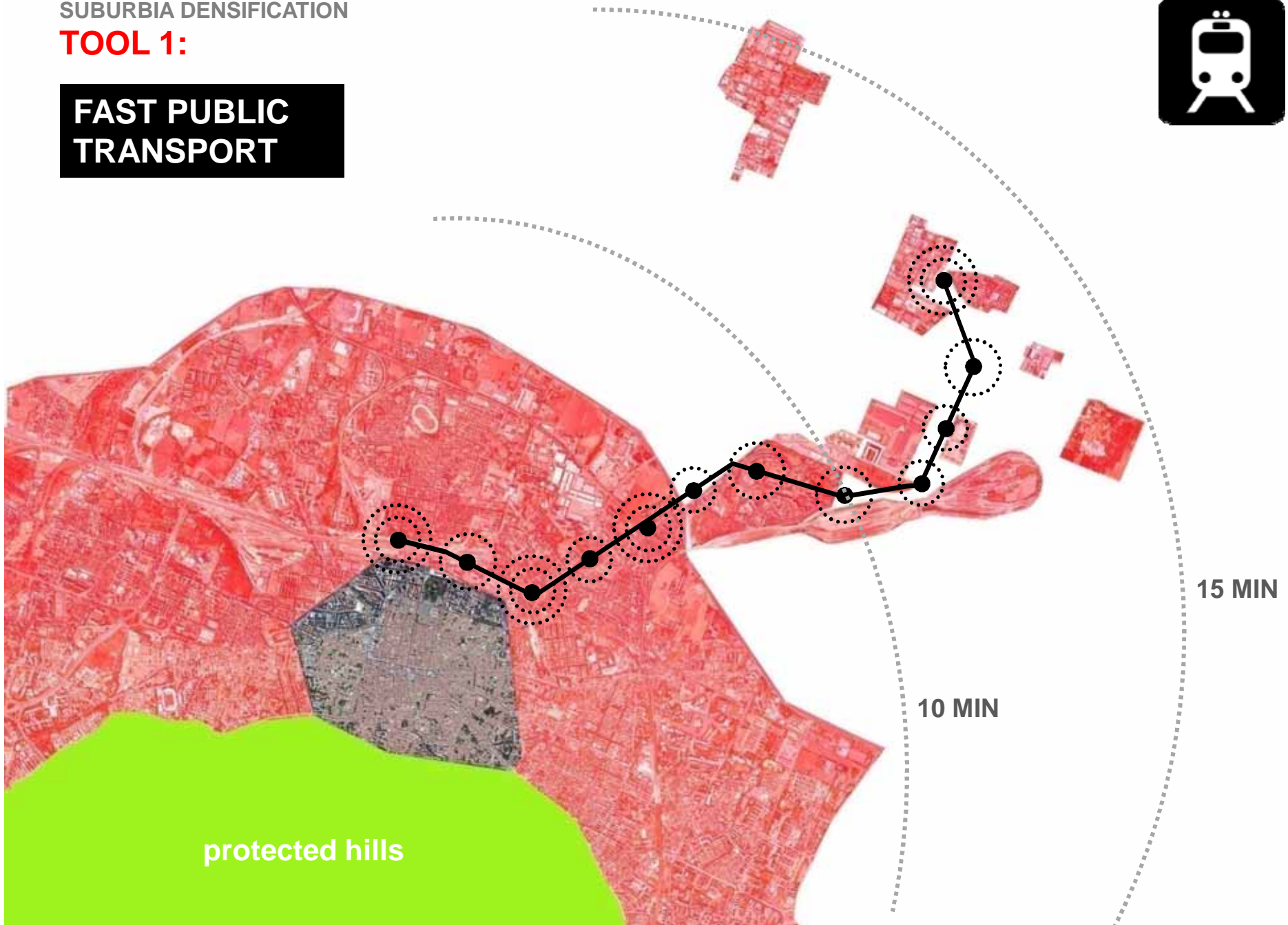


protected hills

SUBURBIA DENSIFICATION

**TOOL 1:**

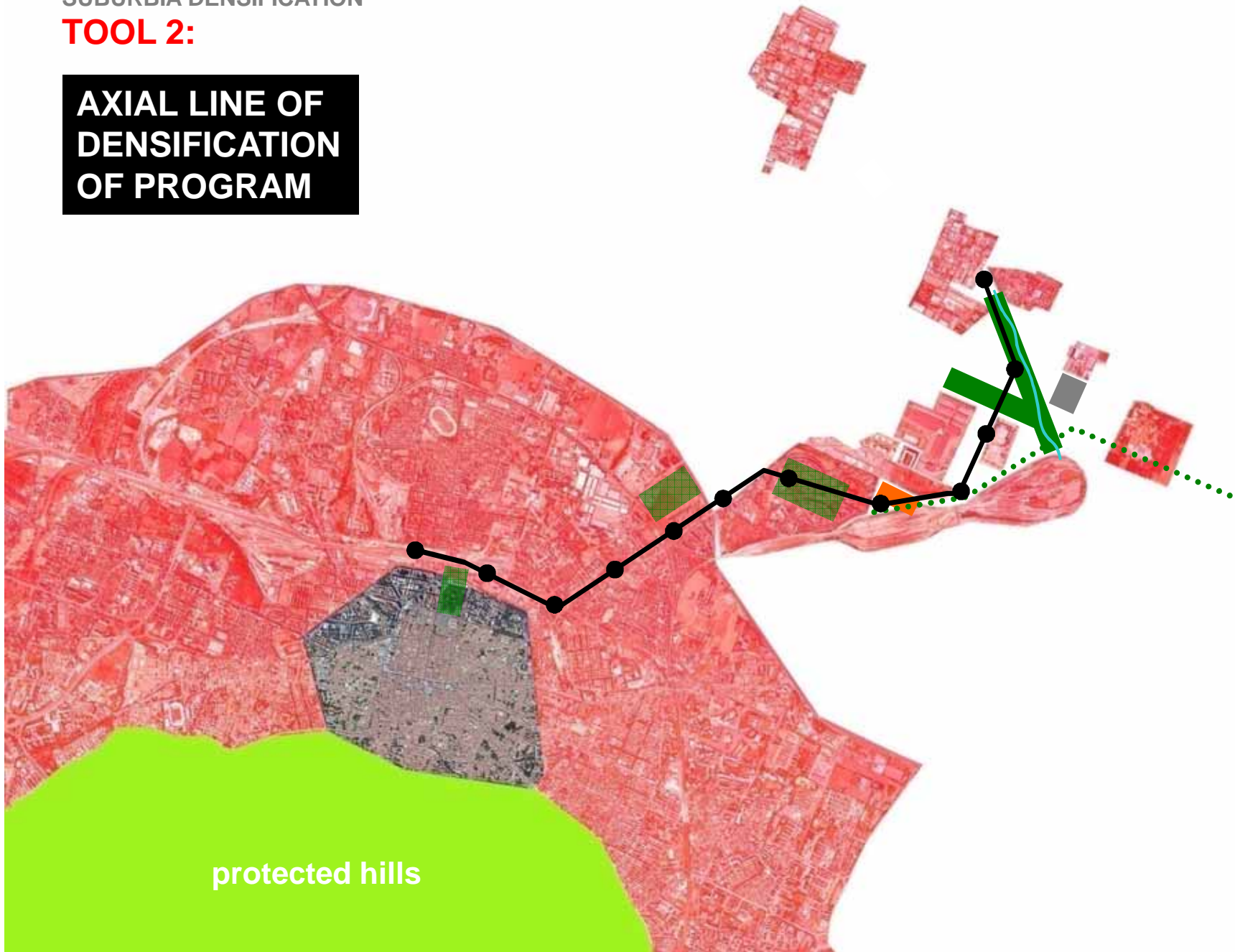
**FAST PUBLIC  
TRANSPORT**





SUBURBIA DENSIFICATION  
**TOOL 2:**

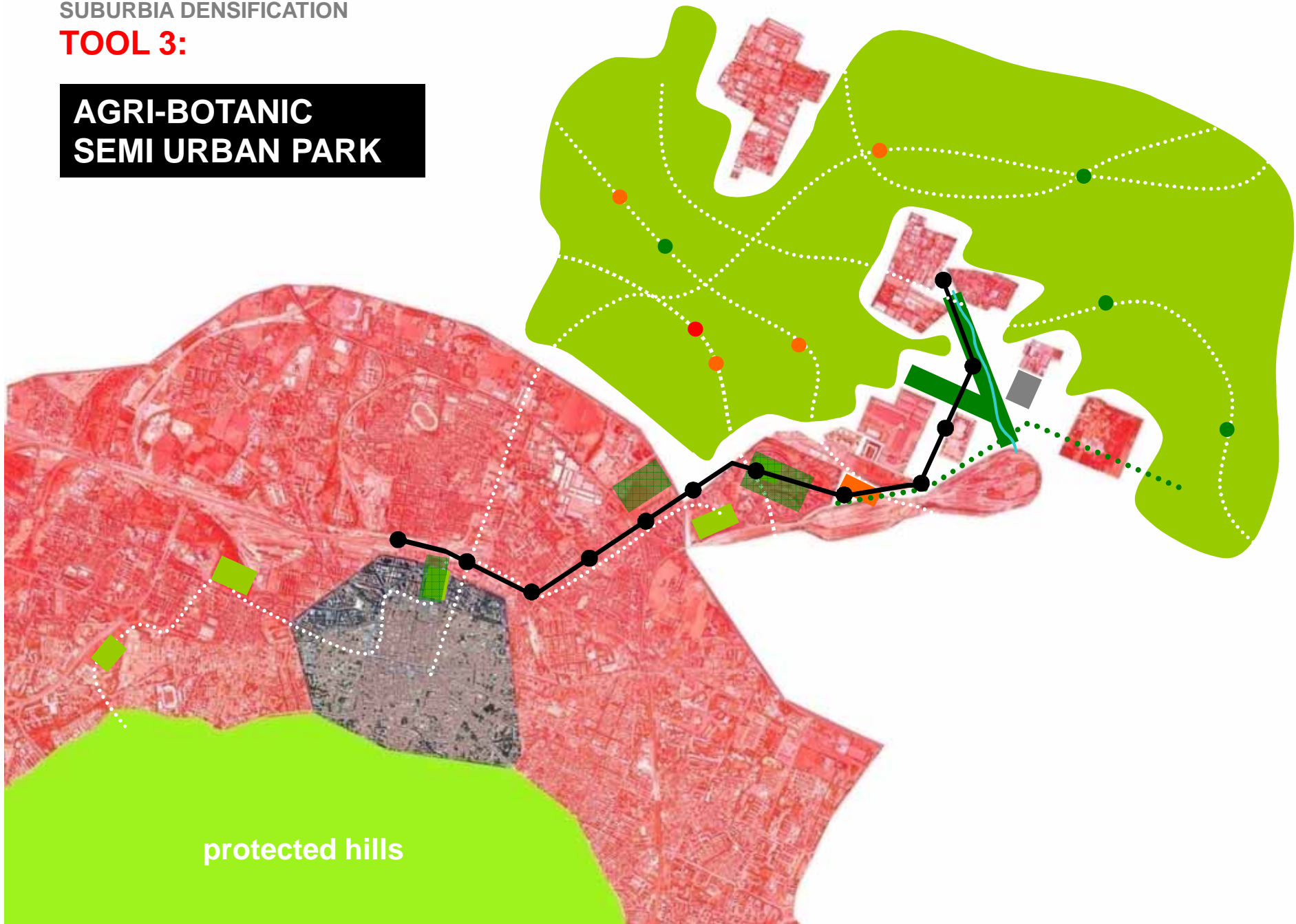
**AXIAL LINE OF  
DENSIFICATION  
OF PROGRAM**



SUBURBIA DENSIFICATION

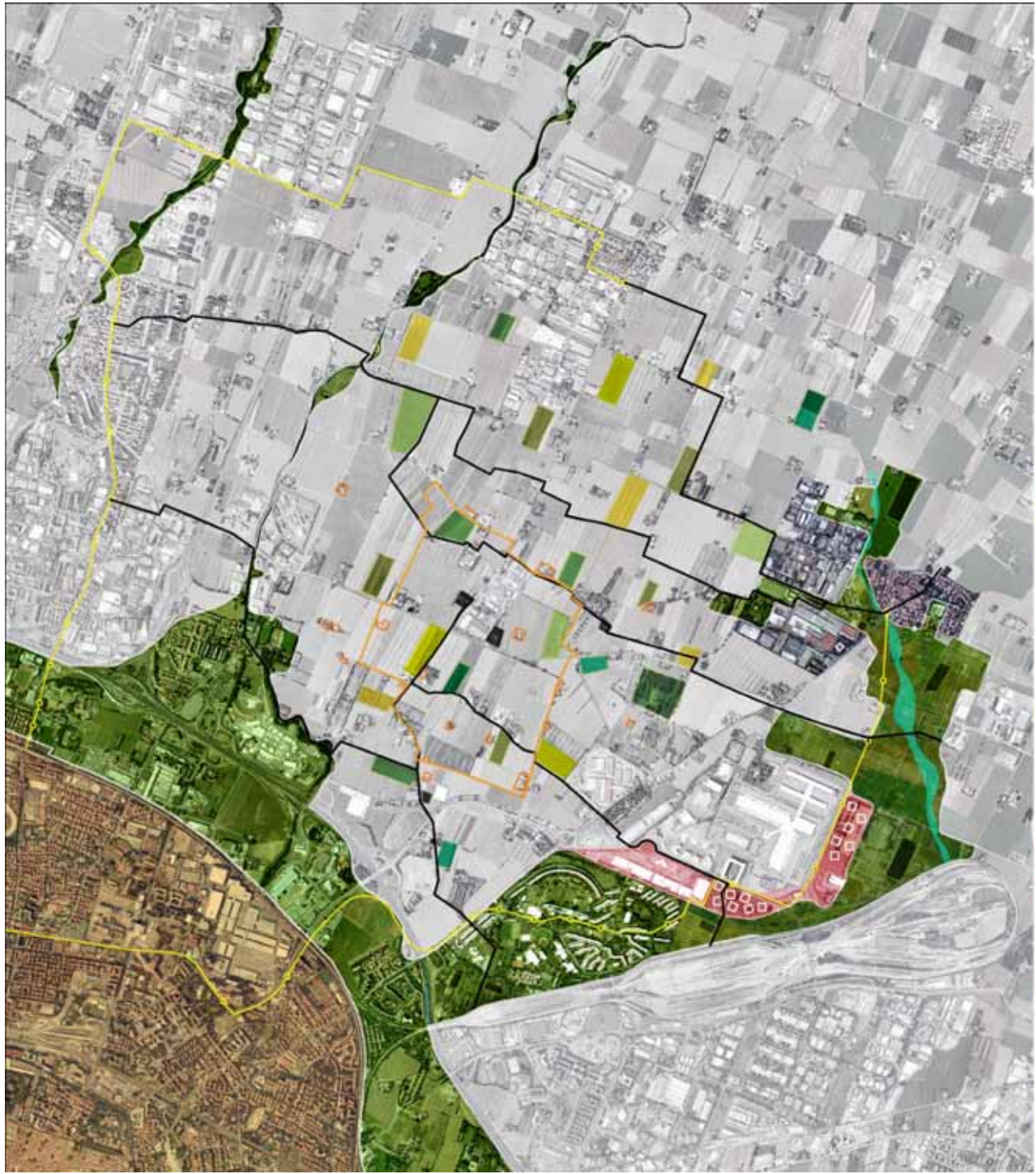
**TOOL 3:**

**AGRI-BOTANIC  
SEMI URBAN PARK**





# FREEZING THE SPRAWL



PUBLIC TRANSPORT  
-TRAM NETWORK



GREEN ARCHIPELAGOS  
OF PROGRAM AND  
PUBLIC SPACES



NETWORK OF  
EPISODIC ELEMENTS  
OF INTEGRATED  
AGRI + CULTURAL  
ENCLAVES



SOFT MOBILITY  
ECO-TRANSPORT



# LE VENE VERDI

## FREEZING THE SPRAWL

PUBLIC TRANSPORT TRAM NETWORK

GREEN INFRASTRUCTURE OF PROXIMITY AND PUBLIC SPACES

NETWORK OF OPENING ELEMENTS OF INTEGRATED AGRI + CULTURAL ENCLAVES

SOFT MOBILITY ECO-TRANSPORT

PUBLIC TRANSPORT TRAM

SYSTEM OF INTEGRATED AGRI + CULTURAL ENCLAVES

GREEN PASSAGE WAYS AS INTEGRATION CORRIDORS OF

GREEN ZONE

TRANSFORMING THE SUBURBAN PERIPHERY

SOFT MOBILITY ECO-TRANSPORT

## PUBLIC TRANSPORT - TRAM

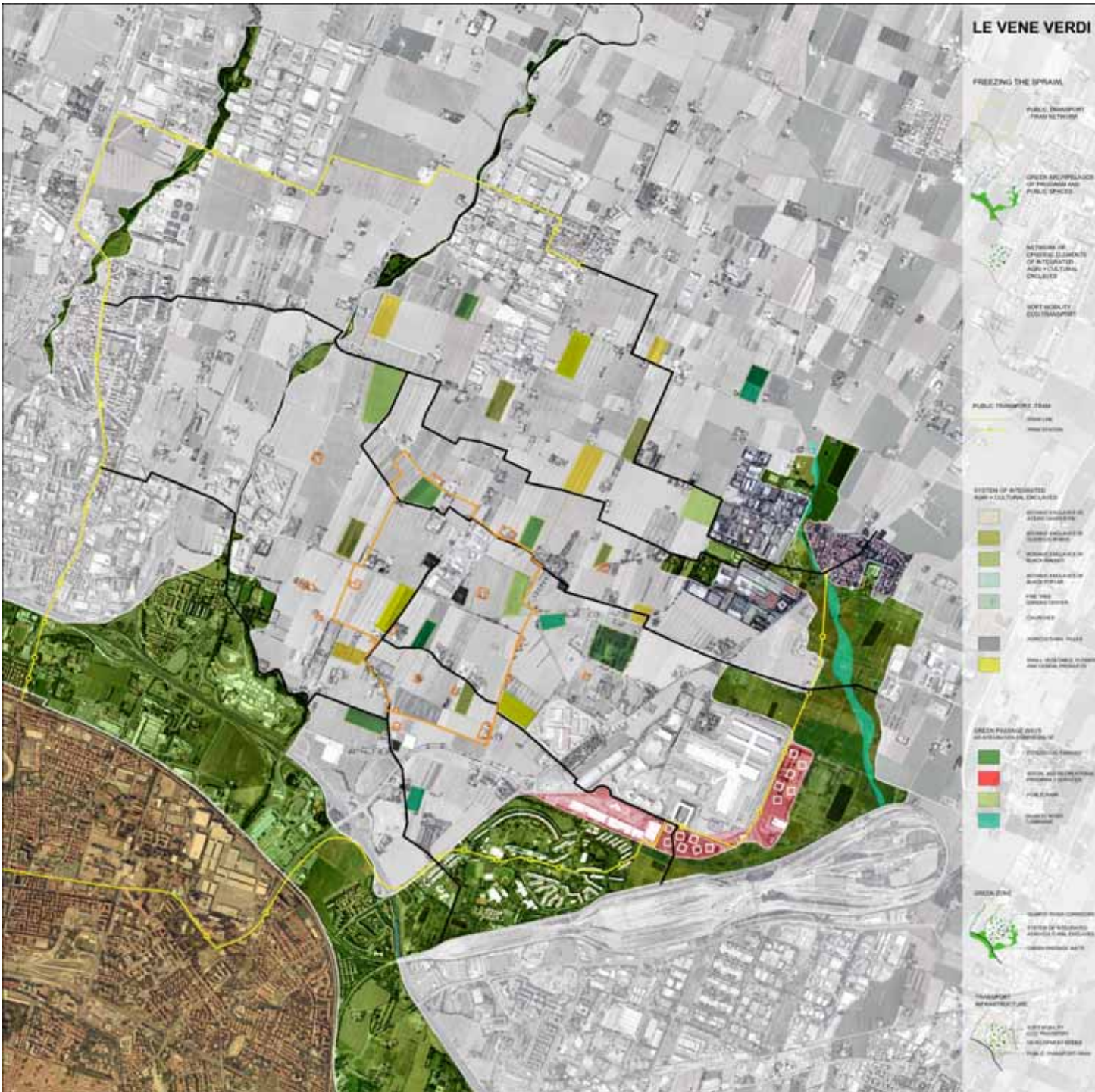
- TRAM LINE
- TRAM STATION

## SYSTEM OF INTEGRATED AGRI + CULTURAL ENCLAVES

- BOTANIC ENCLAVES OF ACERO CAMPESTRE
- BOTANIC ENCLAVES OF QUERCUS ROBUS
- BOTANIC ENCLAVES OF BLACK WALNUT
- BOTANIC ENCLAVES OF BLACK POPLAR
- PINE TREE GARDEN CENTER
- CHURCHES
- AGRICULTURAL VILLAS
- SMALL VEGETABLE, FLOWER AND CEREAL PRODUCTS

## GREEN PASSAGE WAYS AS INTEGRATION CORRIDORS OF

- ECOLOGICAL FARMING
- SOCIAL AND RECREATIONAL PROGRAM + SERVICES
- PUBLIC PARK
- QUARTO RIVER CORRIDOR







**BOTANIC TRAIL**



**PILGRIMAGE TRAIL**

CROCE COPERTA



PILASTRO





**PILGRIMAGE TRAIL**



RECREATIONAL TRAIL





ECOLOGICAL FARMING





NEIGHBORHOOD GREEN MARKET





# LE VENE VERDI

## FREEZING THE SPRAWL

- PUBLIC TRANSPORT FEED NETWORK
- GREEN INFRASTRUCTURE OF PROXIMITY AND PUBLIC SPACES
- NETWORK OF OPENING ELEMENTS OF INTEGRATED URBAN + CULTURAL ENCLAVE
- NEW MOBILITY ECO-TRANSPORT

## PUBLIC TRANSPORT FEED

- TRANSIT
- TRANSITION

## SYSTEM OF INTEGRATED URBAN + CULTURAL ENCLAVES

- REINTEGRATED IN EXISTING URBAN
- REINTEGRATED IN SUBURBAN
- REINTEGRATED IN RURAL URBAN
- REINTEGRATED IN RURAL SUBURBAN
- NEW URBAN ENCLAVES
- COURTYARD
- INTERCITY NODE
- NEW URBAN ENCLAVE WITH PUBLIC SPACES

## GREEN INFRASTRUCTURE OF PROXIMITY AND PUBLIC SPACES

- PROXIMITY PARK
- NEW AND REINTEGRATED URBAN + CULTURAL ENCLAVE
- PUBLIC PARK
- NEW URBAN ENCLAVE

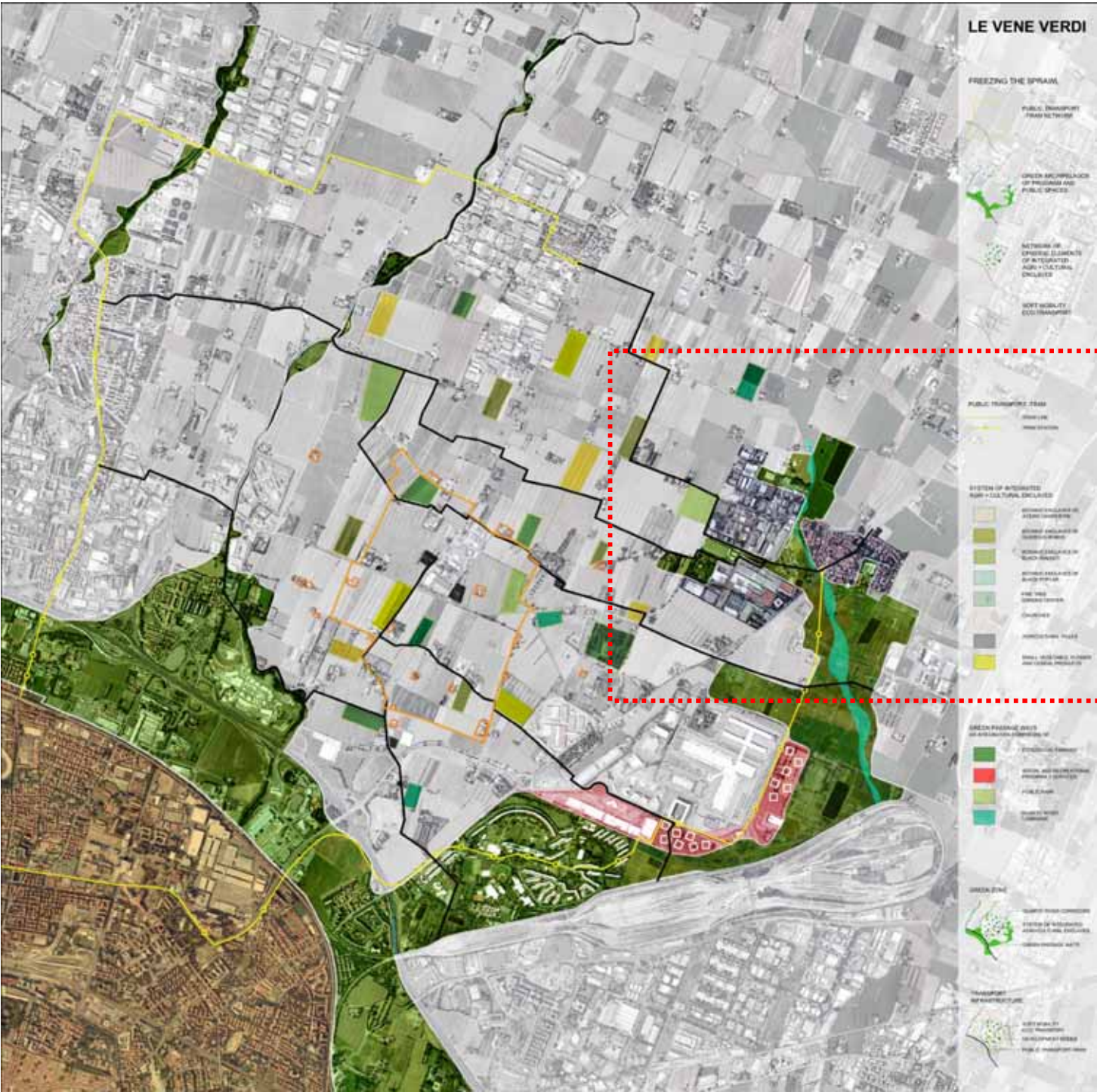
## GREEN ENCLAVE

- NEW URBAN ENCLAVE WITH PUBLIC SPACES
- NEW URBAN ENCLAVE WITH PUBLIC SPACES
- NEW URBAN ENCLAVE WITH PUBLIC SPACES

## TRANSITION

- NEW URBAN ENCLAVE WITH PUBLIC SPACES
- NEW URBAN ENCLAVE WITH PUBLIC SPACES
- NEW URBAN ENCLAVE WITH PUBLIC SPACES

**QUARTO  
INFERIORE**





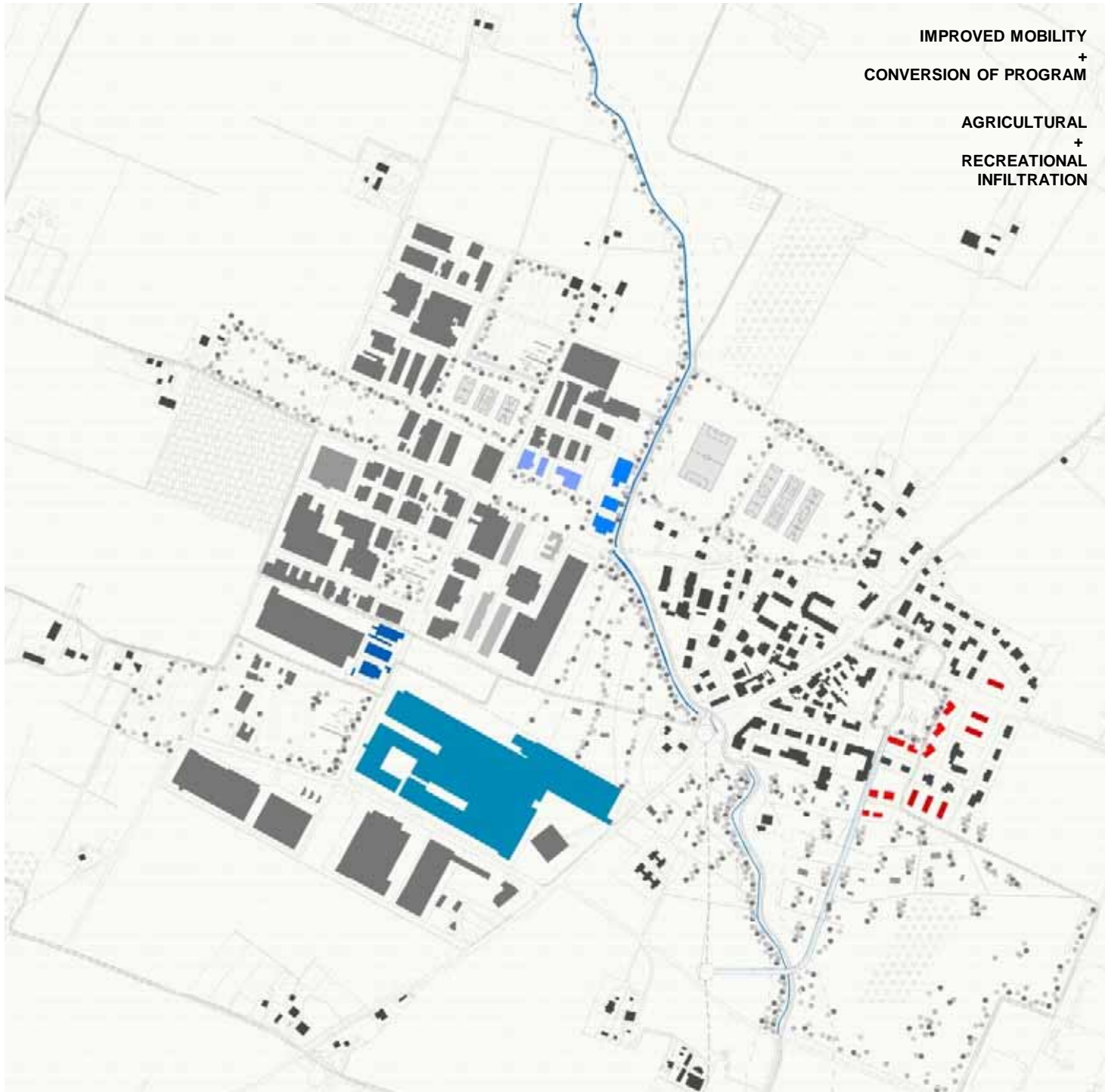
IMPROVED MOBILITY  
+  
CONVERSION OF PROGRAM

AGRICULTURAL  
+  
RECREATIONAL  
INFILTRATION



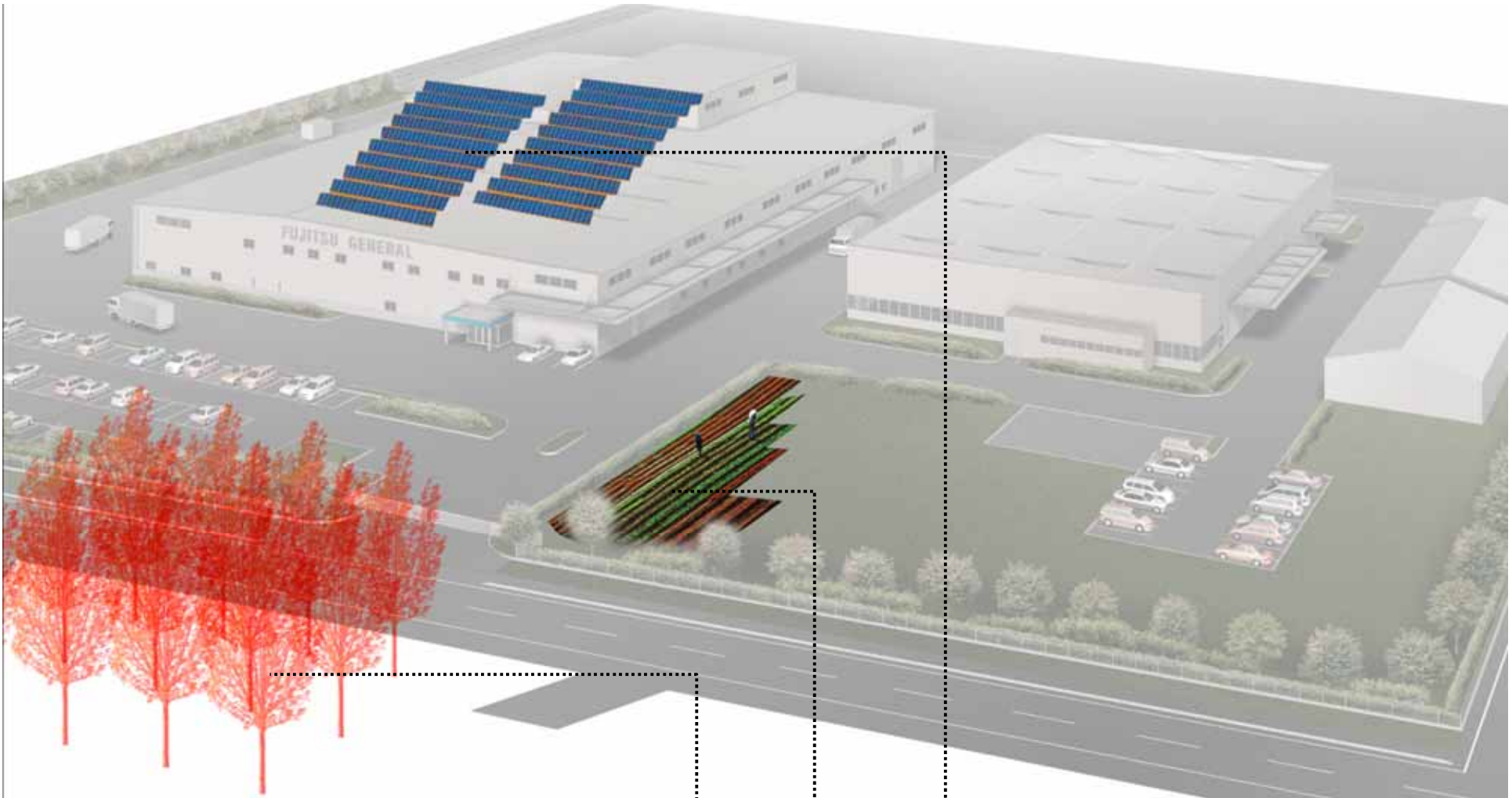
SYSTEM OF INTEGRATED  
AGRI + CULTURAL ENCLAVES

-  NEW HOUSING
-  COMMERCIAL AND SERVICES
-  EXISTING RESIDENTIAL BUILDINGS
-  LIGHT INDUSTRY AND SERVICES
-  CONVERSION TO OFFICE BUILDINGS
-  SPORT HALL
-  ELDERLY HOUSING
-  PRIMARY SCHOOL
-  FACTORY OUTLET
-  SOLAR ENERGY FARMING





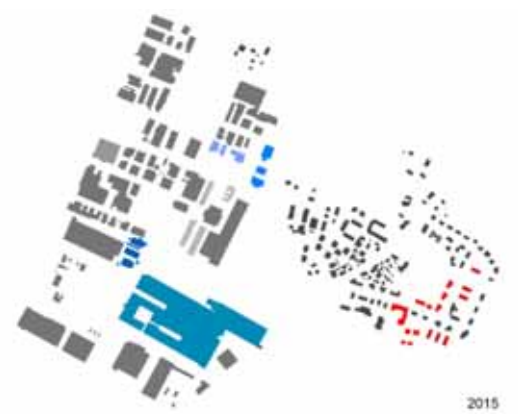




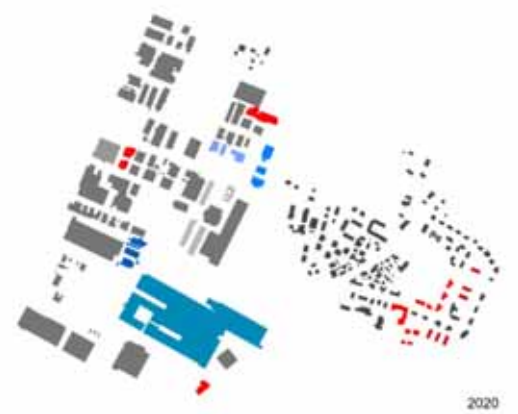
**solar energy farming**

**agricultural farming**

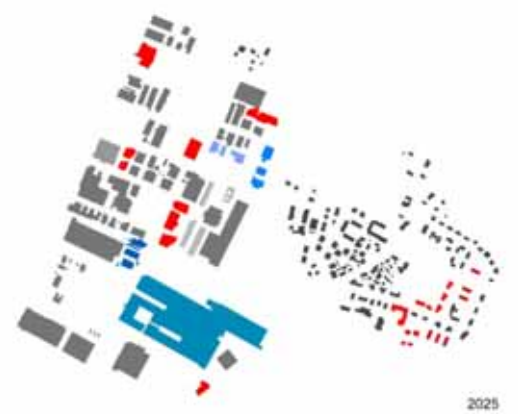
**endemic trees farming**



2015



2020



2025



