

After urban sprawl * *A new alliance town-countryside*

Intensification // *Rarefaction*
UPgrading // *DOWNgrading*

Politecnico di Milano

Provincia di Bologna

*Federico Zanfi * Giulia Fini || Mirko Andolina * Federico Marcantognini * Roberto Naboni * Aurélie Sabatier * Yan Jing*

An aerial photograph of a city, likely Los Angeles, showing a dense urban area with a grid of streets and buildings. A large, irregularly shaped area in the center of the city is highlighted with a dashed blue border. A white callout box with a blue border is positioned over the highlighted area, containing text. The background is a mosaic of brown, tan, and green patches, representing a mix of urban and agricultural land.

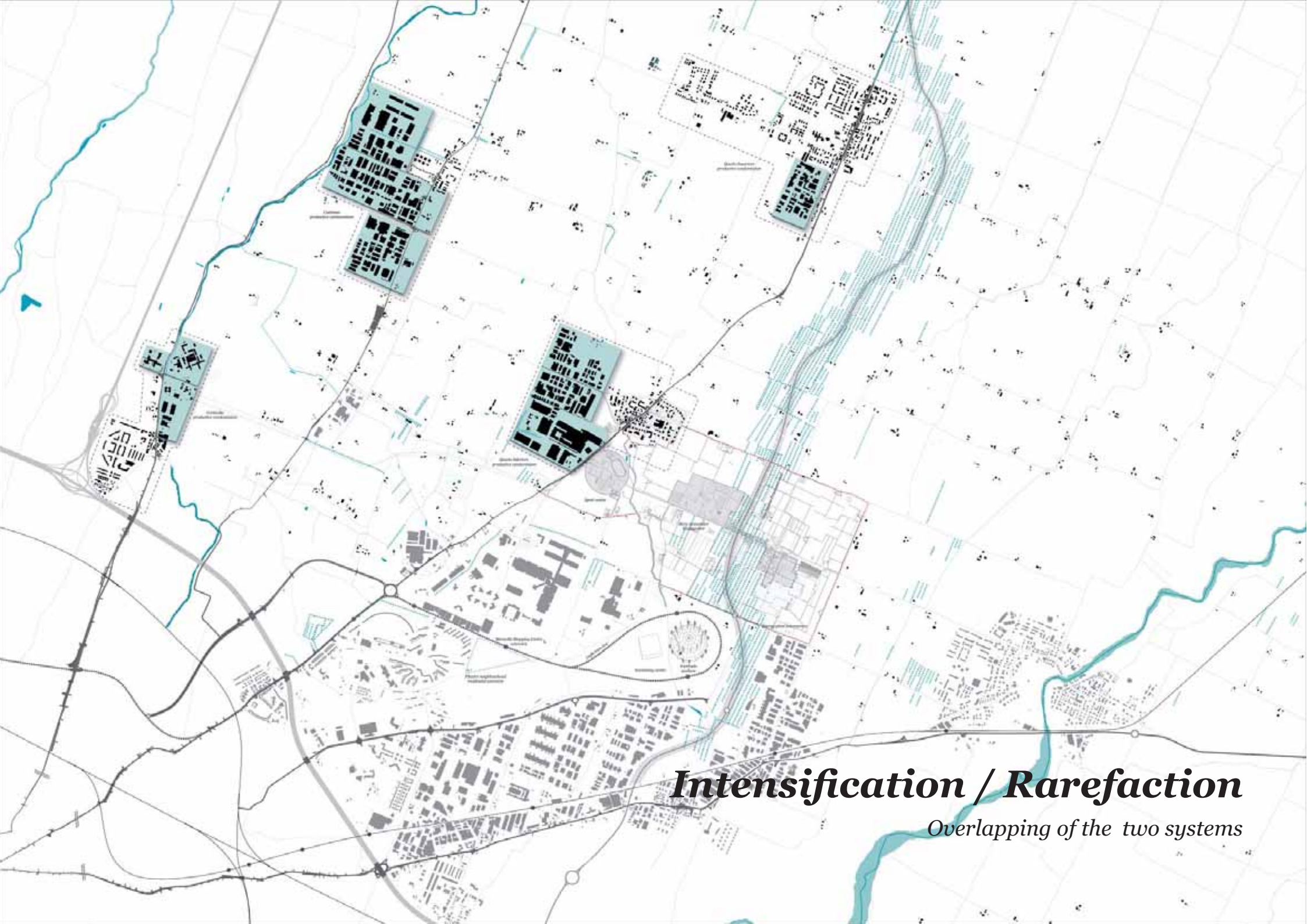
-25%
of active warehouses

Could it be possible to fill all the vacant spaces with new productive activities?



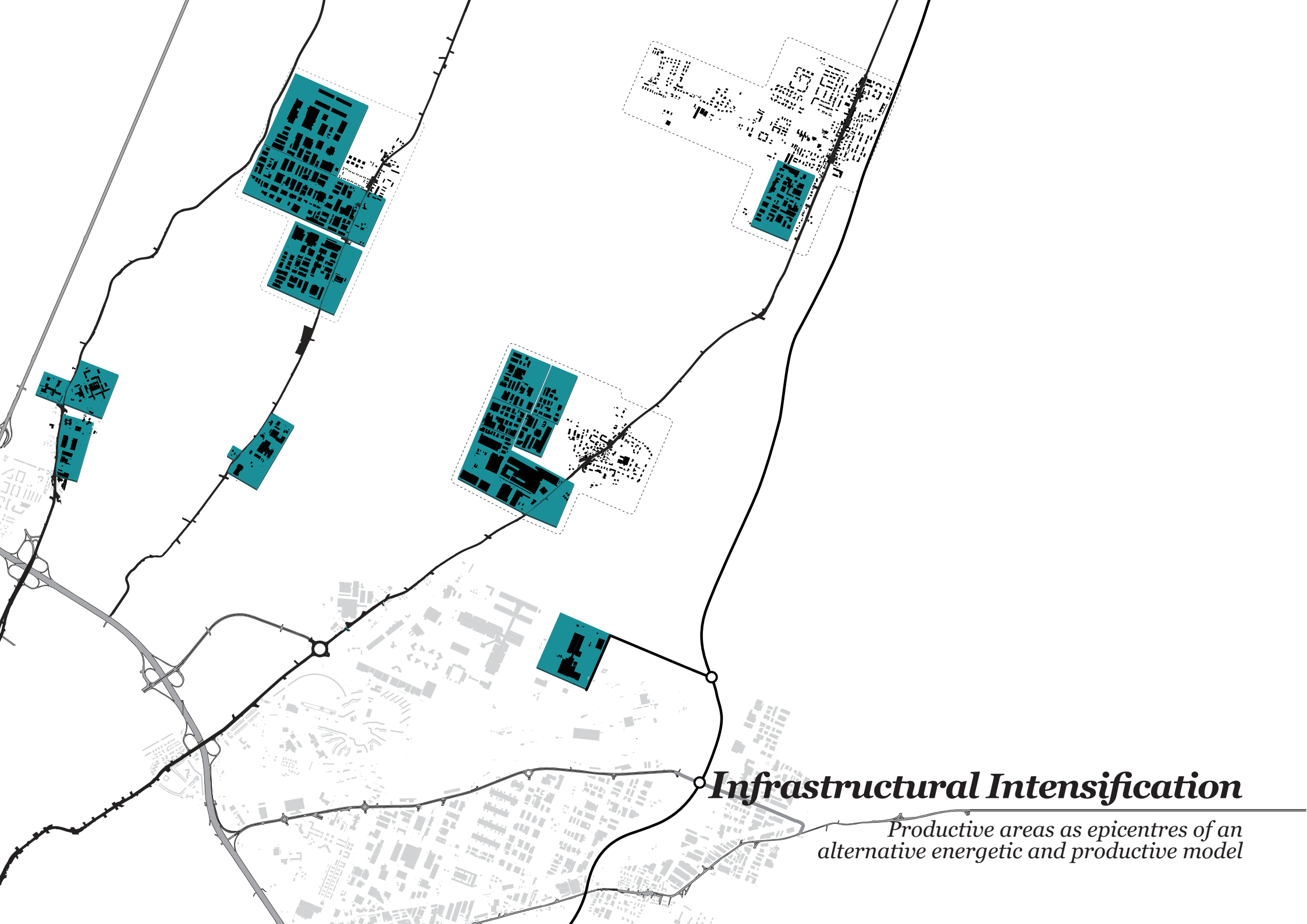
Increase of scattered settlements

Could it be possible to reduce the energy consumption and the public costs of these housing units?



Intensification / Rarefaction

Overlapping of the two systems



Infrastructural Intensification

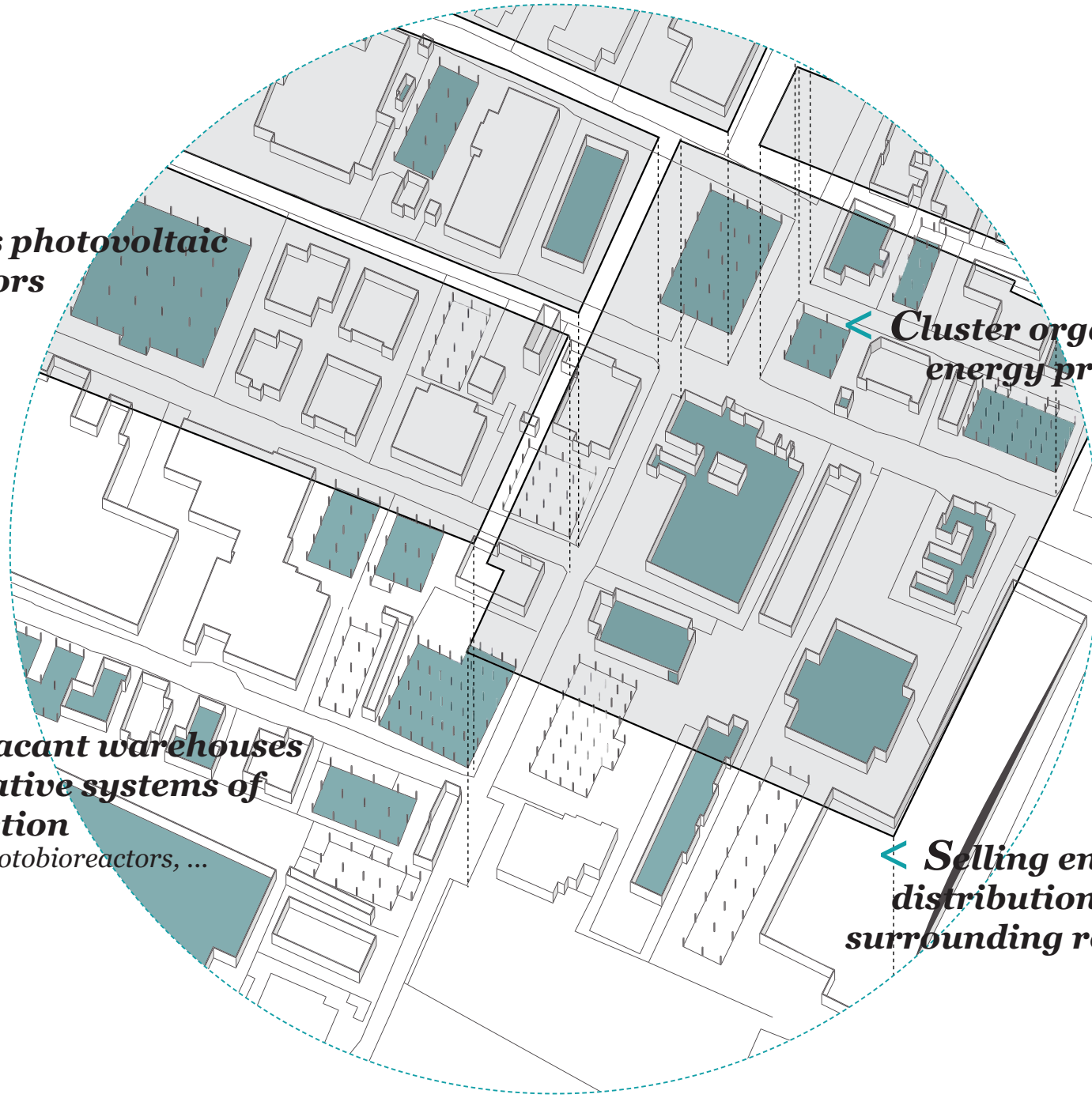
Productive areas as epicentres of an alternative energetic and productive model

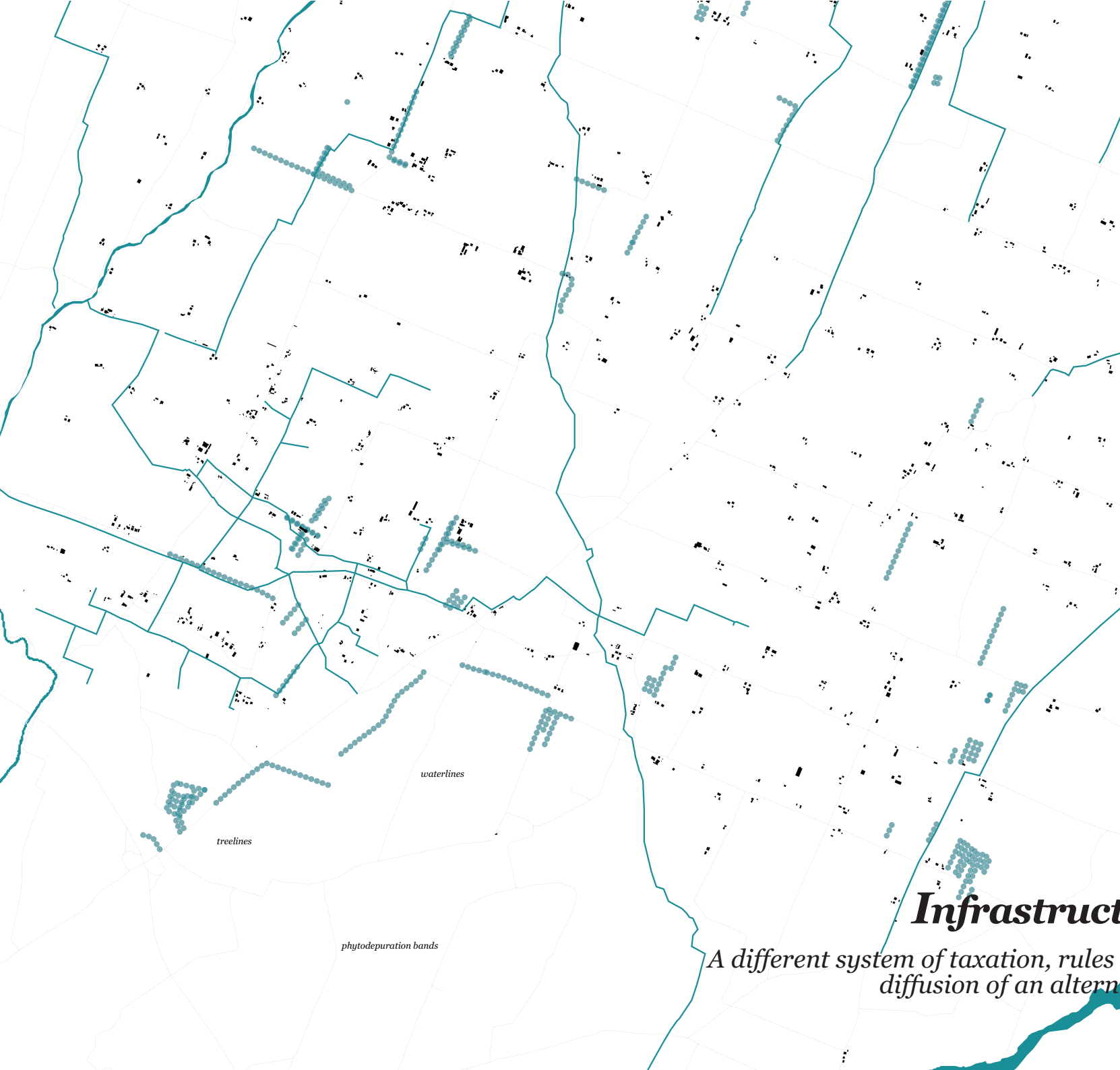
> Rooftops as photovoltaic energy collectors

> Re-use of vacant warehouses for new innovative systems of energy production
through biomass, photobioreactors, ...

< Cluster organization of the energy productive plants

< Selling energy through a distribution network to the surrounding residential area.





waterlines

treelines

phytodepuration bands

Infrastructural Rarefaction

A different system of taxation, rules and incentives stimulate the diffusion of an alternative infrastructural system

> **Stormwater collectors**

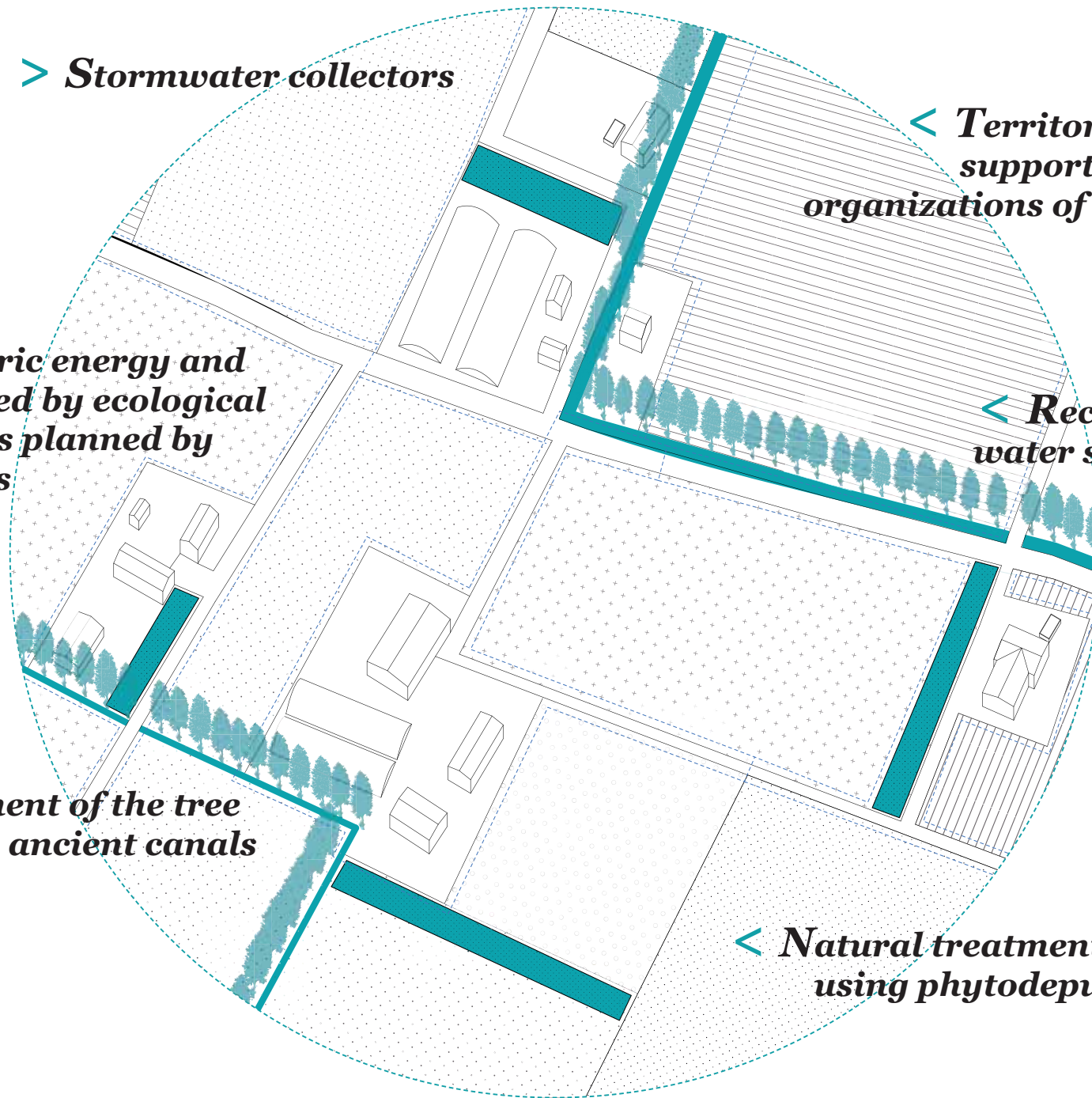
< **Territory management supported by collective organizations of the inhabitants and farmers**

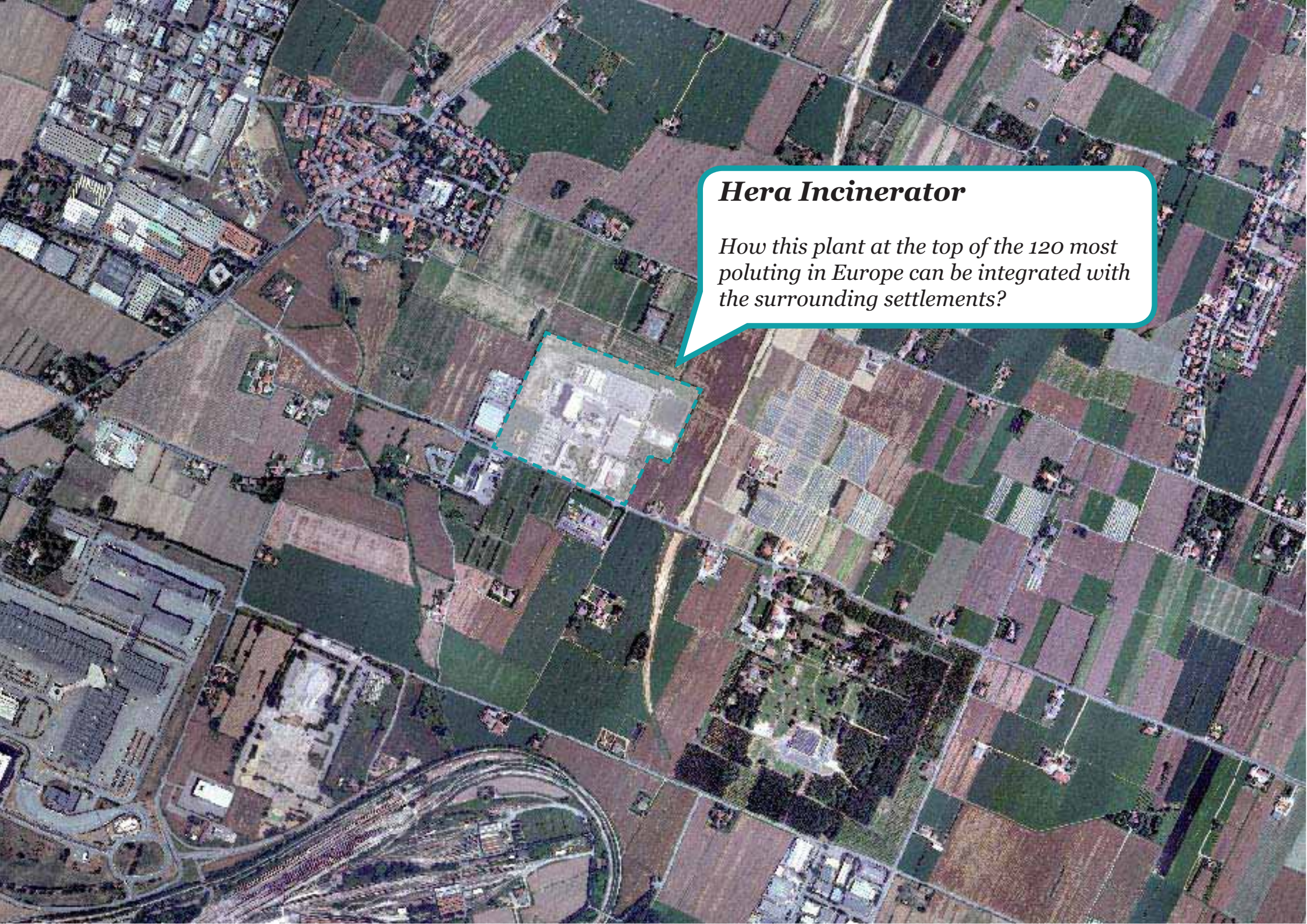
> **Heat, Electric energy and Water furnished by ecological infrastructures planned by network actors**

< **Reclamation of the water system network**

> **Reinforcement of the tree lines along the ancient canals**

< **Natural treatment of wastewater using phytodepuration systems**





Hera Incinerator

How this plant at the top of the 120 most polluting in Europe can be integrated with the surrounding settlements?

An aerial photograph showing a rural landscape with a patchwork of agricultural fields in various shades of green, brown, and purple. A large, irregularly shaped area in the upper-left quadrant is highlighted with a dashed blue border. This area contains a few small buildings and a dirt road. To the left of this area is a dense residential or commercial settlement. In the bottom-left corner, there is a large, complex highway interchange with multiple overpasses and ramps. A speech bubble with a white background and a blue border is positioned in the upper-left, overlapping the highlighted area and the settlement.

Planned polifunctional pole

Which kind of activities could be host in this area?



Railway Yards almost dismissed

Why not using these urban voids for new regenerating functions, fighting against the ground consumption?

An aerial photograph of a rural landscape featuring a patchwork of agricultural fields in various shades of green and brown. A cluster of buildings, including residential houses and larger industrial or commercial structures, is visible in the upper left and lower left. A prominent multi-lane highway interchange is located in the bottom left corner. A dashed blue line traces a path through the fields, representing a proposed road cut or infrastructure project. The line starts near the highway, curves through the fields, and ends near a small cluster of buildings in the center-right.

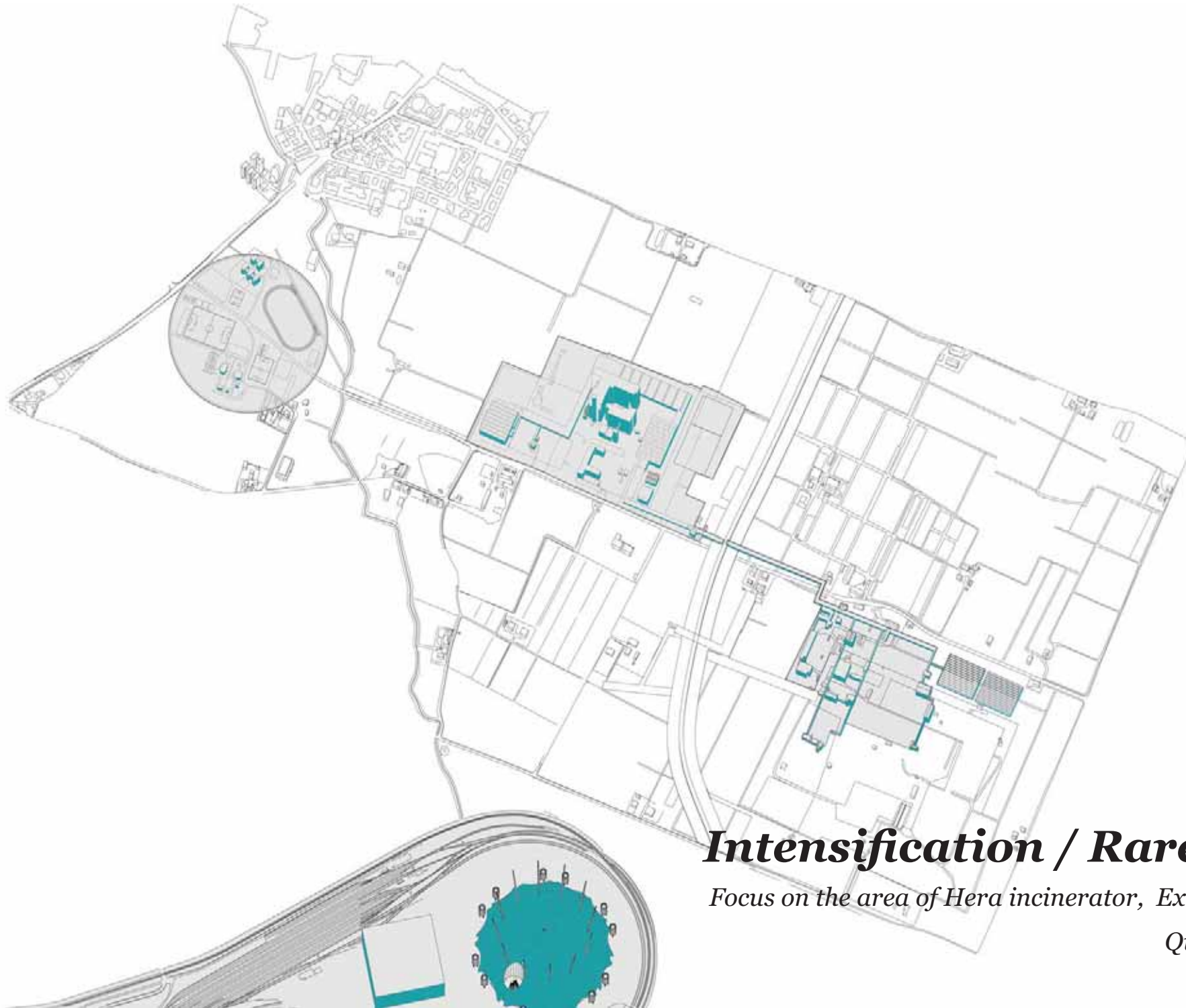
Lungo Savena

How this new cut in the landscape could be more than simple fast mobility infrastructure?



Ex-Polveriera in dismissal

How can we deal with a dangerous space of production which represents a container of biodiversity?



Intensification / Rarefaction

Focus on the area of Hera incinerator, Ex-Polveriera and

Quarto Superiore



New Energy Plant

- < Exhibition related to energy production systems***
- < Didactic Workshops***
- < Experimental cultivations
(for producing energy)***
- < New Headquarter Hera***
- < Research spaces and Workshops for Bologna Agricultural Faculty***

Ex-Polveriera

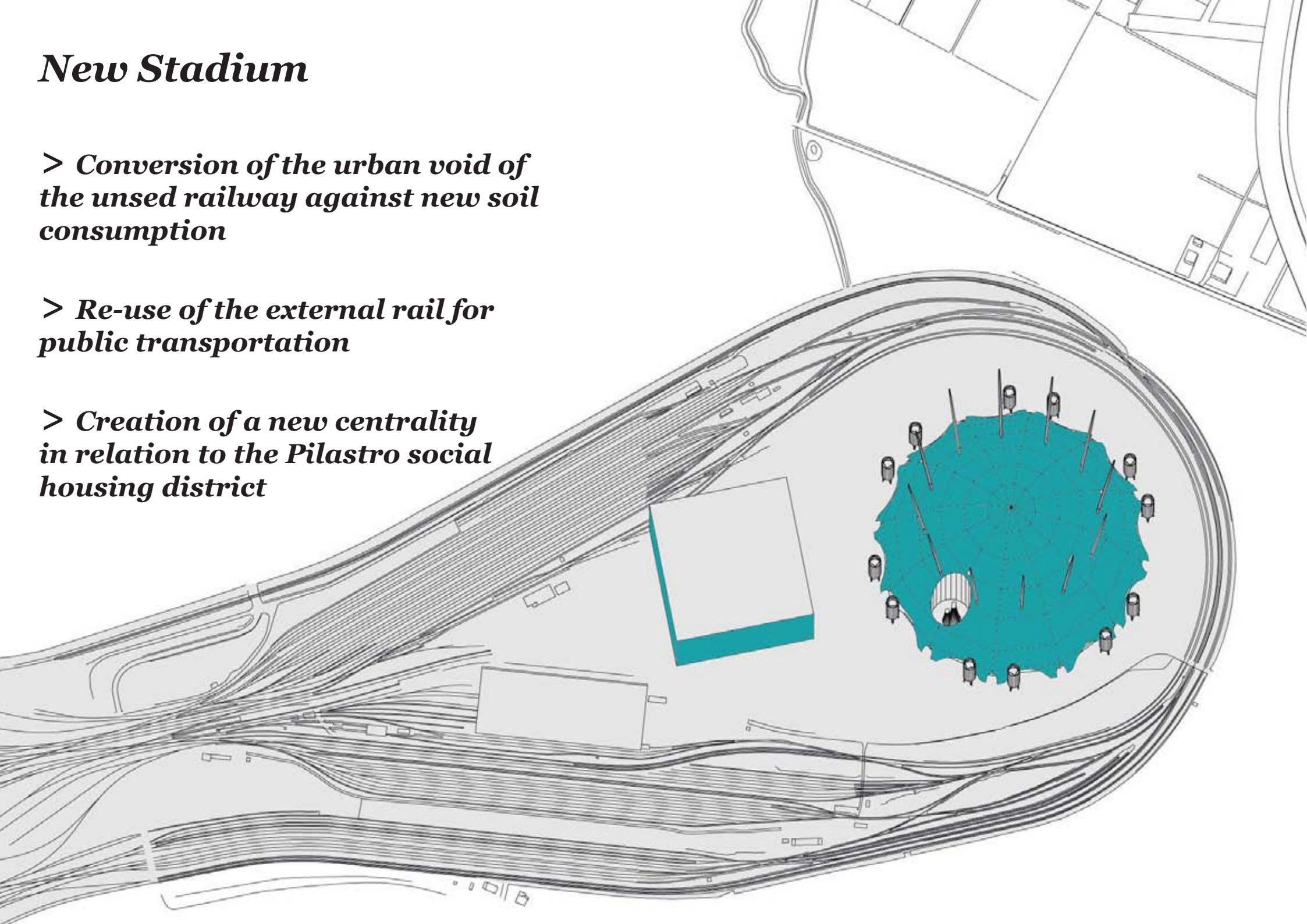
- > Incinerator as new environmental energetic system producer***
- > Preservation of the biodiversity
(animal and plants)***
- > Extension of the buffer zone
(for producing energy)***
- > Link to the territorial mobility system***

New Stadium

> Conversion of the urban void of the unused railway against new soil consumption

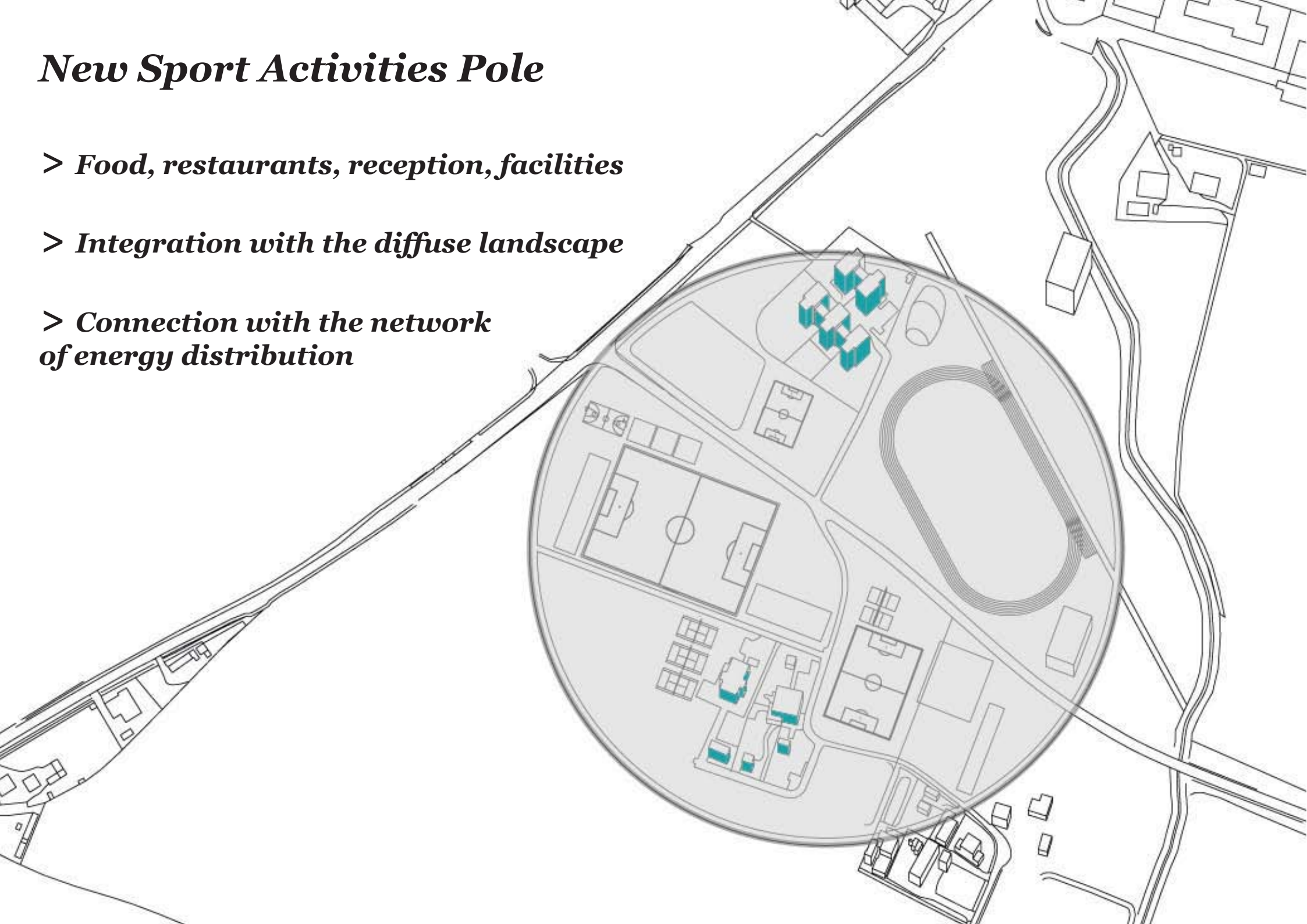
> Re-use of the external rail for public transportation

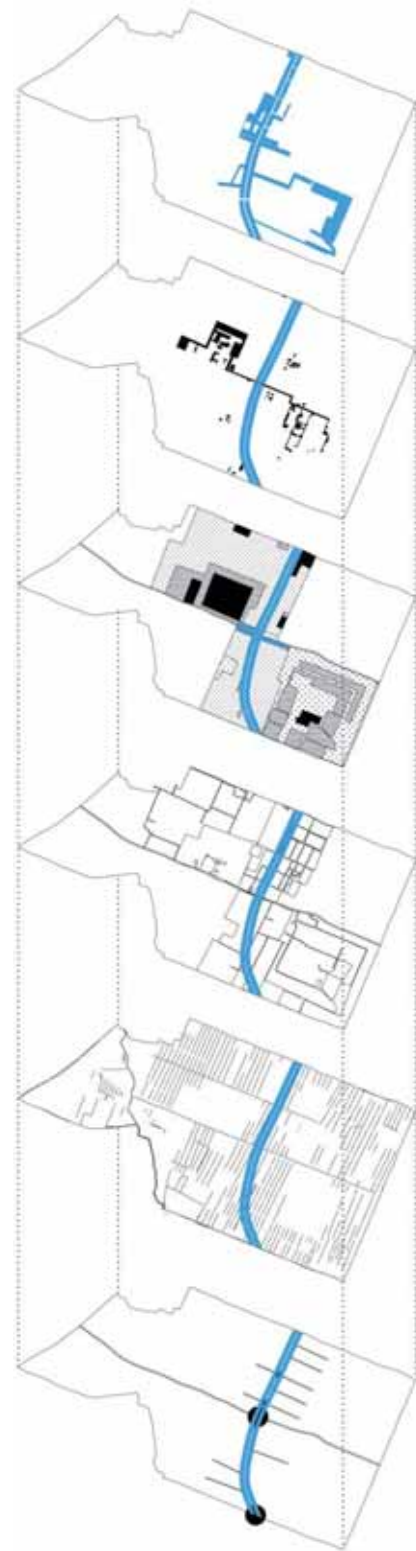
> Creation of a new centrality in relation to the Pilastro social housing district



New Sport Activities Pole

- > Food, restaurants, reception, facilities***
- > Integration with the diffuse landscape***
- > Connection with the network of energy distribution***





< Green Productive Fields

Poplars|Pioppo, Willows|Salice and Locust|Robinia for Woodchips|Cippato and biomass

< Transversal Spine of Productive Park

< Cultivations

Cereals and Experimental Fields

< Street system

< Water Canals

< Transversal crossing intersections

*Thank you for
your attention !*