

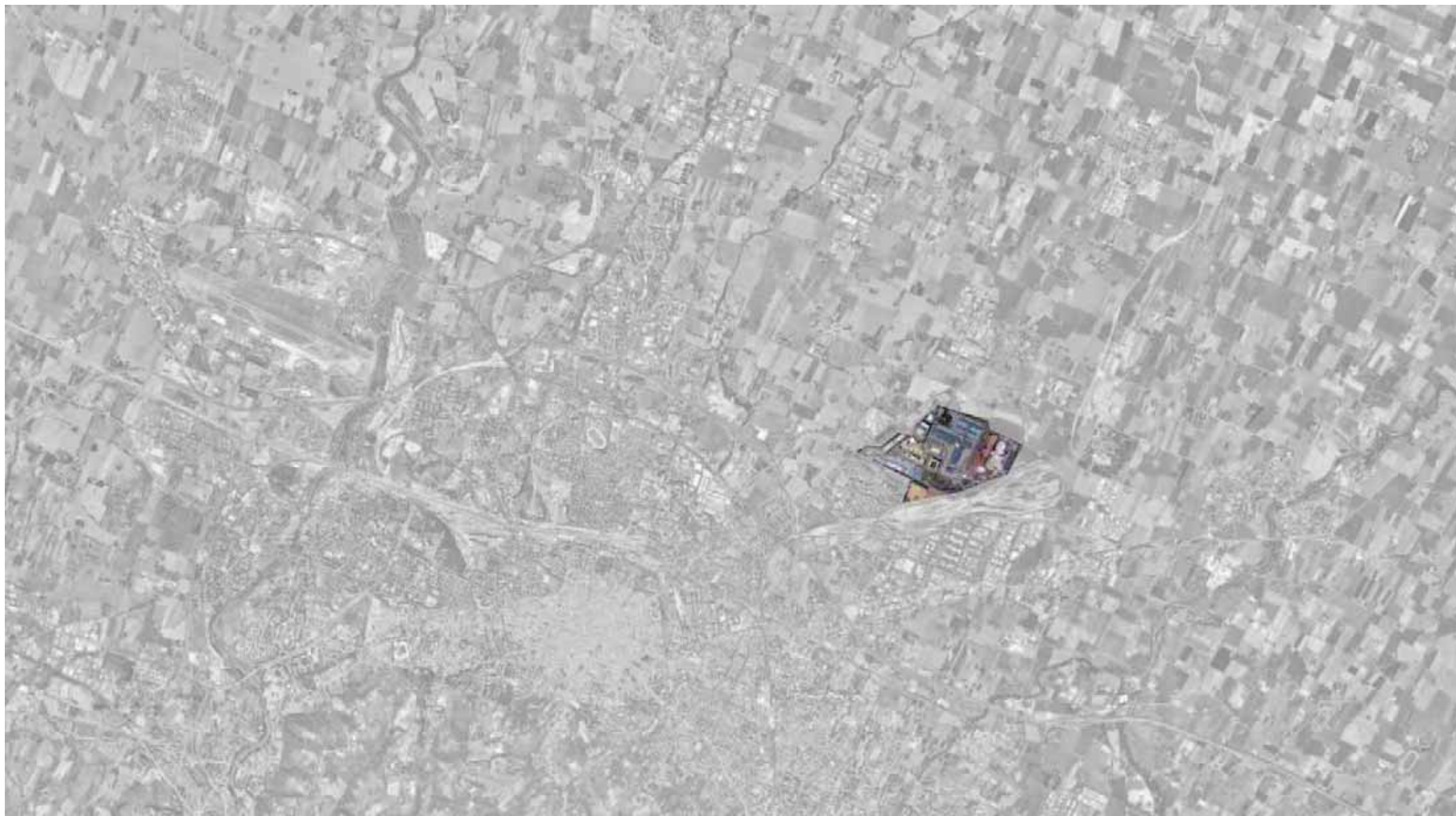


# **LA CITTÀ È CAMPAGNA** Universitat Politècnica de Catalunya

**'LA CIUTAT ÉS CAMP'**

Bernat Ardèvol  
Marta Franquesa  
Alba Julià  
Omar Rebollo  
Jordi Utset

Marta Carrasco, tutor







**Our area contains:**

IL MERAVILLE  
BUSINESS PARK  
UNIVERSITÁ DI AGRARIA  
CAAB  
EX-ASAM

**And it is next to:**

PILASTRO QUARTER  
QUARTO INFERIORE  
RAILWAY TERMINAL

**The question:**

IS IT POSSIBLE A NEW  
ALLIANCE BETWEEN TOWN  
AND COUNTRYSIDE?

FIRST STEP

**SWOT ANALYSIS** > Strengths Weaknesses Opportunities Threats > KEYWORDS > CONCEPTS

<p><b>WEAKNESSES</b></p> <ul style="list-style-type: none"> <li>- Deficient public transport</li> <li>- Zonning</li> <li>- No social mix (social segregation)</li> <li>- Segregation time (the area only works at the weekend)</li> </ul>	<p><b>THREATS</b></p> <ul style="list-style-type: none"> <li>- Centralized university</li> <li>- Unuse of the area</li> <li>- Infrastructural scars</li> <li>- Hard Limits</li> <li>- Area thought for road transport and vehicles, and less for pedestrians</li> <li>- A lot of parking area &gt; many vehicles &gt; private vehicle required</li> <li>- Undefined of the identity of the place</li> <li>- Lack of interaction between poles of different activity</li> </ul>
<p><b>STRENGTHS</b></p> <ul style="list-style-type: none"> <li>- 100,000 students</li> <li>- CAAB &gt; the center of all the area</li> <li>- Area between two important poles, Bologna and Quarto inferiore</li> <li>- Goods railway terminal / a good railway connection with Europe</li> <li>- Ecotones / borders / limits</li> <li>- Landscape heritage / cultural heritage</li> </ul>	<p><b>OPORTUNITIES</b></p> <ul style="list-style-type: none"> <li>- The promotion of agriculture / future agricultural park</li> <li>- Empty buildings (business park, faculty of agriculture)</li> <li>- Waste growing areas as a connection between areas &gt; permeability (areas in transformation)</li> <li>- Open spaces non used, with no clear function (interstitial waste spaces)</li> <li>- Natural corridors</li> <li>- The promotion of a new centrality</li> <li>- A big productive area</li> </ul>

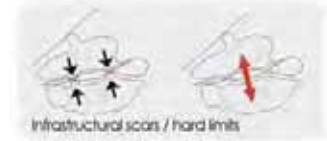
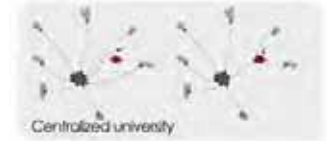
SECOND STEP

**STRATEGIES > PROPOSAL > SCENARIOS**

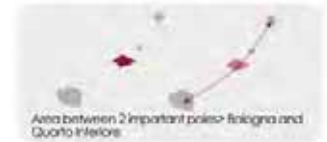
WEAKNESSES



THREATS

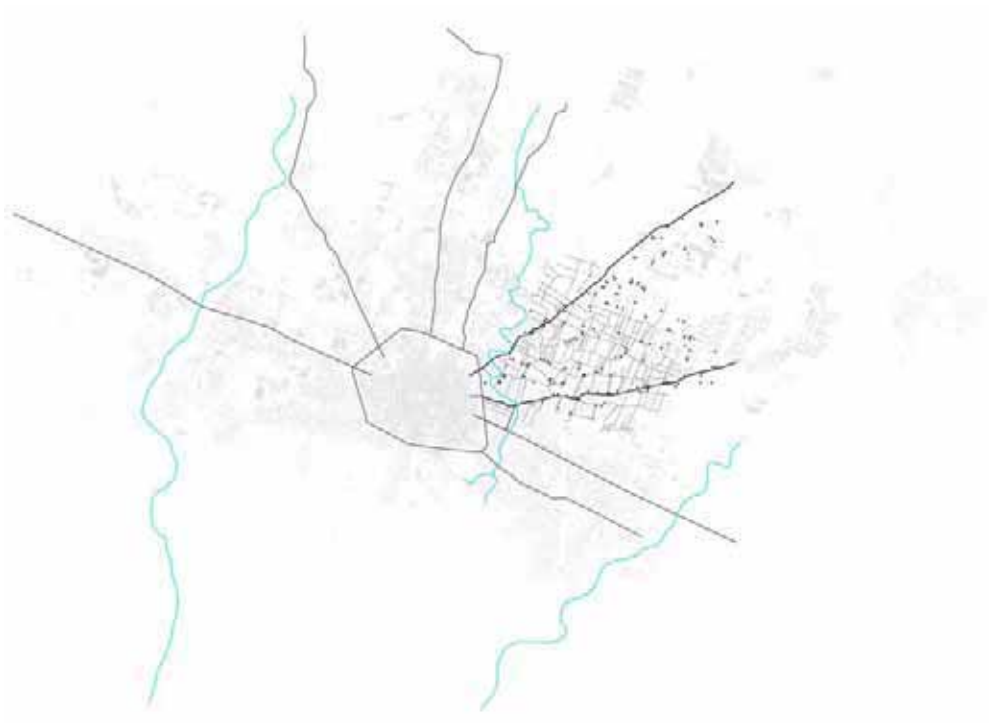


STRENGTHS



# The evolution of the area

s.XIX (1850)



s.XX (in the fifties)

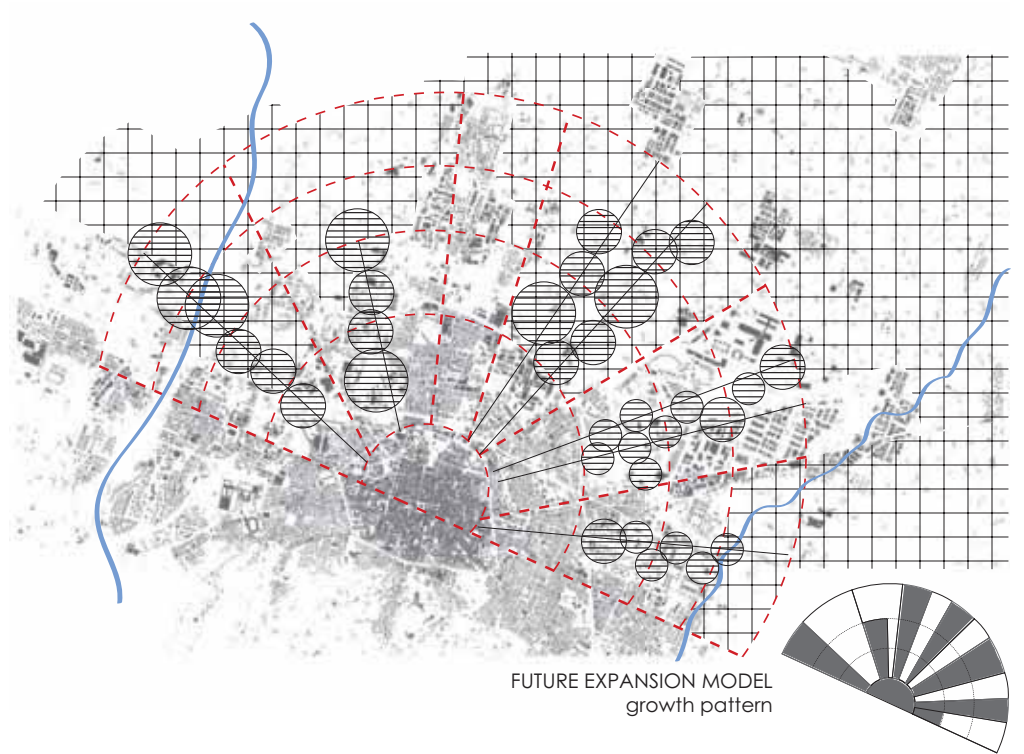
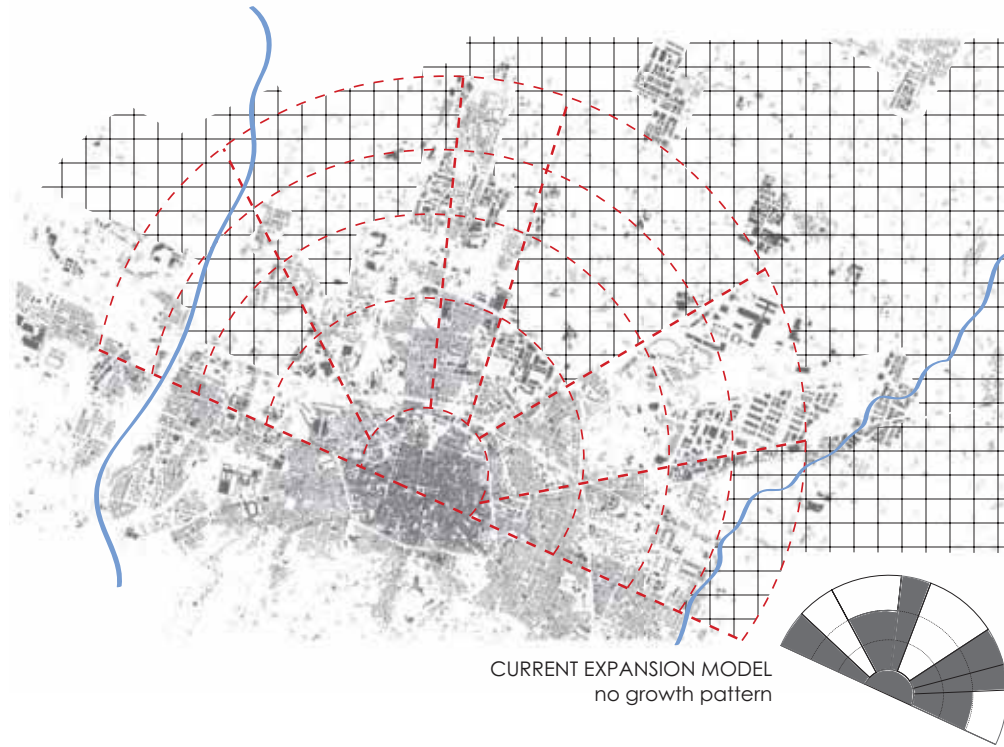


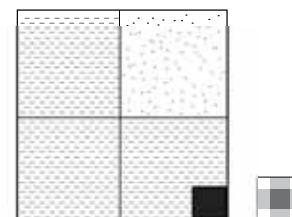
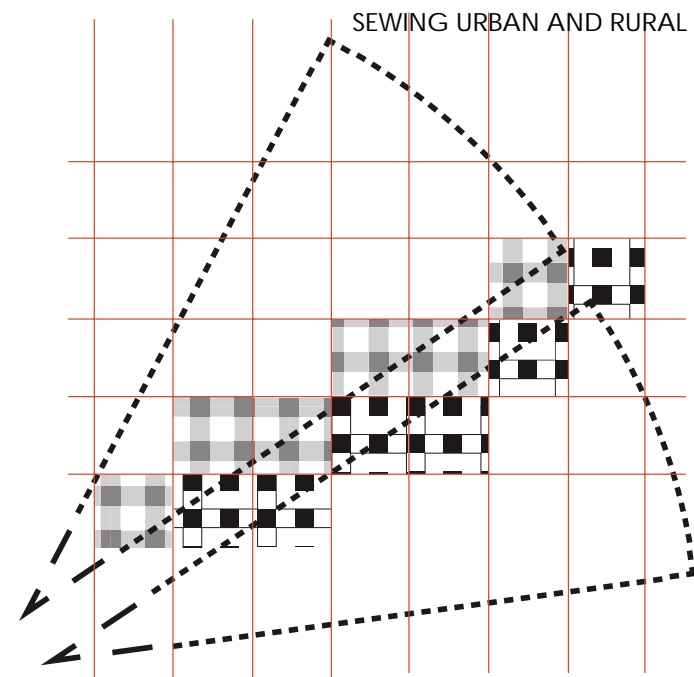
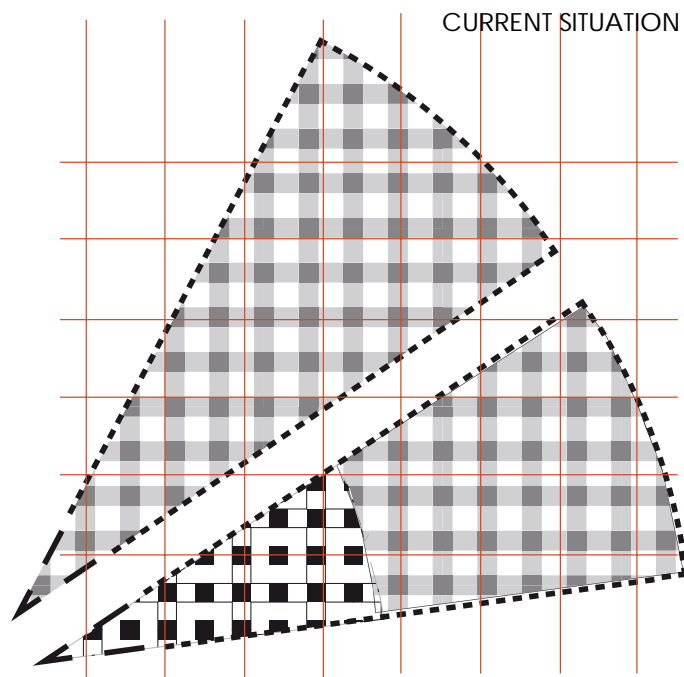
Today...



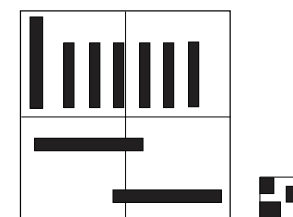


# TERRITORIAL MODEL

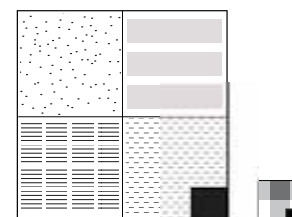
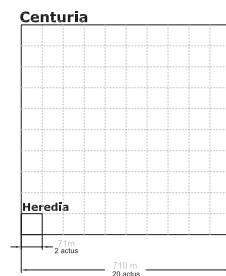
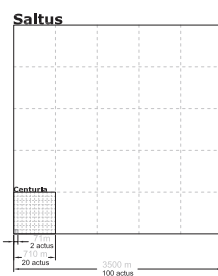




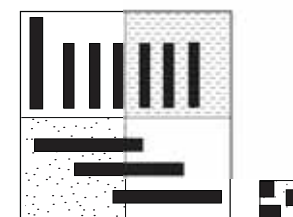
current crop



current settlement



tech crop



mixed-use

# SISTEMS CONDITIONS

### 1. Natural runoff

Study of the runoff system with the treatment centre to re-use the collected and treated water.

### 2. Irrigation

Study of the current irrigation system to expand and optimize the installations or better and economic implementation.

### 3. Specialized infrastructure for production

All the internal circulations of the agricultural production are connected to the logistics. Logistics are attached to main roads to access and superimpose the techniques.

### 4. Specialized infrastructure for leisure

The agriculture includes leisure in plots surrounded by energetic and other cultures and at the same time combined with the leisure spaces of the plot.

### 5. State and municipal infrastructure

The current infrastructure in the plot depends on the network connection of the roads, introduction of high speed transport or distribution. Transport is clean for pedestrians.

### 6. Electrical installation

Solar panels, wind turbines and resources to provide energy to the different plots.

### 7. Workers

Easy access to the urban resources that provide enough or cross and transport.

### 8. Users

Great connection between urban settlements and the agricultural production means and private transport necessities.

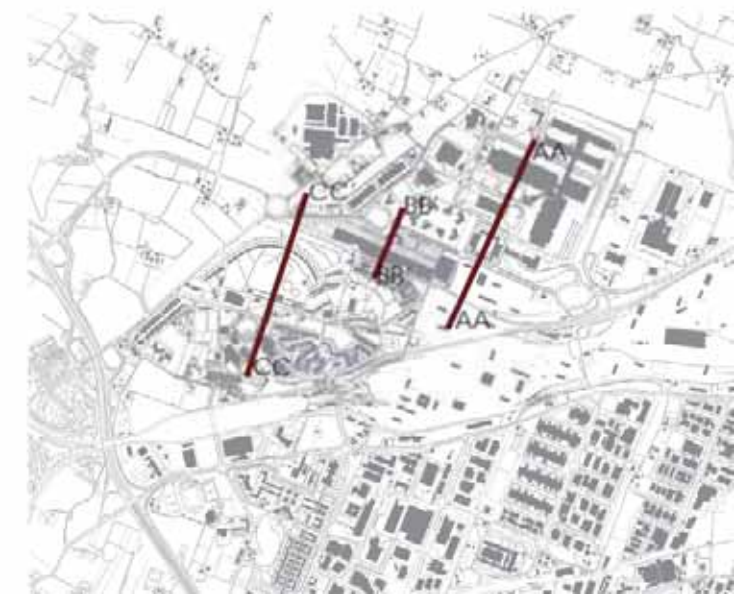
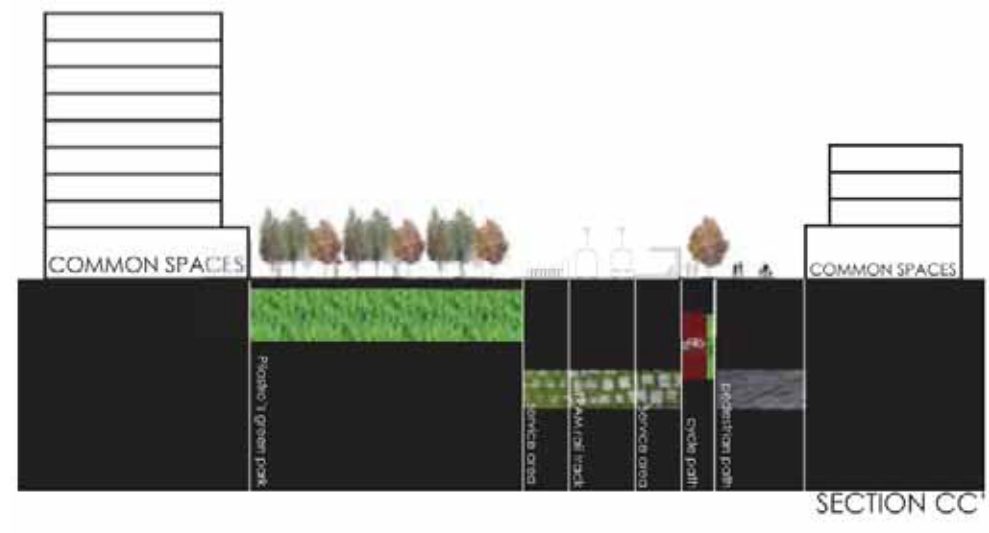
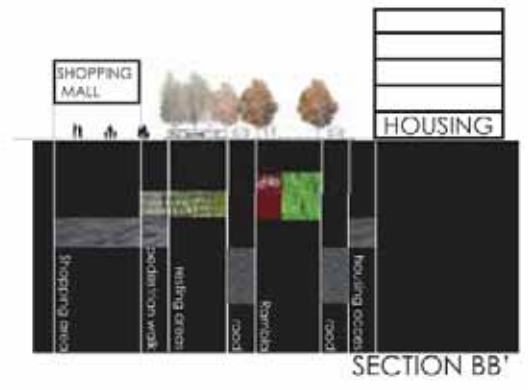




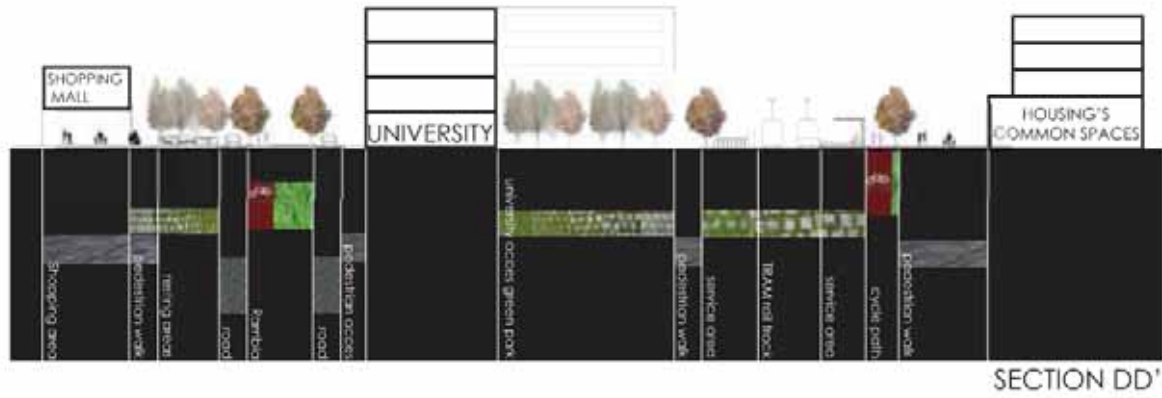
**THE VISION** Expectations

“A **REGIONAL** STRATEGY FOR A **LOCAL** PROJECT”

# CROSS SECTIONS

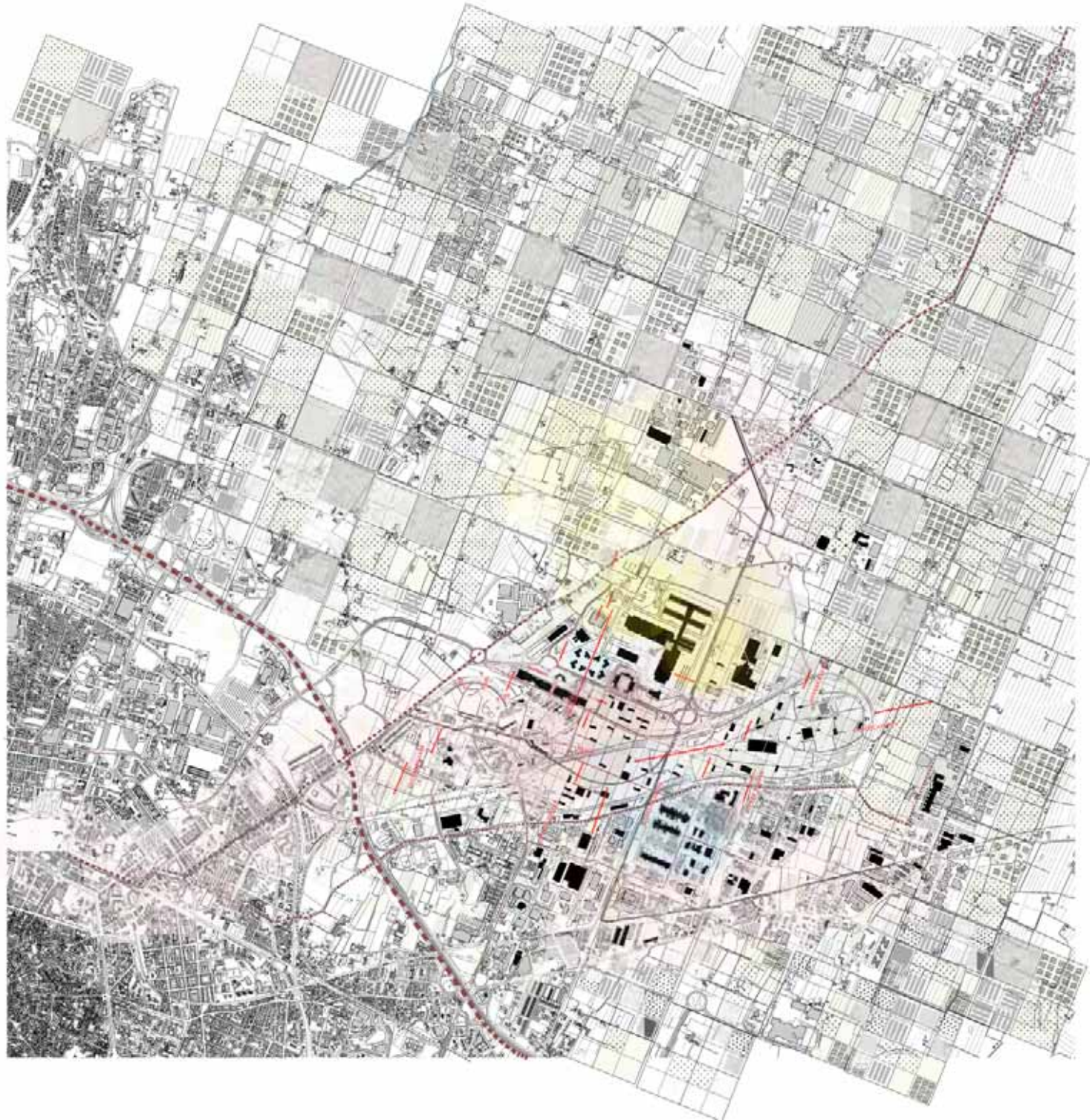


# CROSS SECTIONS





# MASTERPLAN



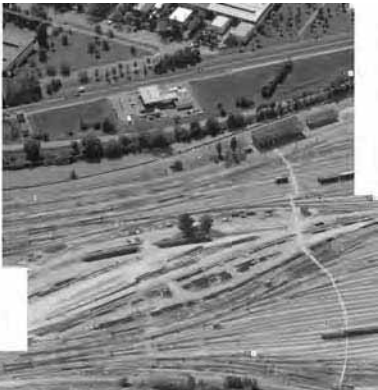
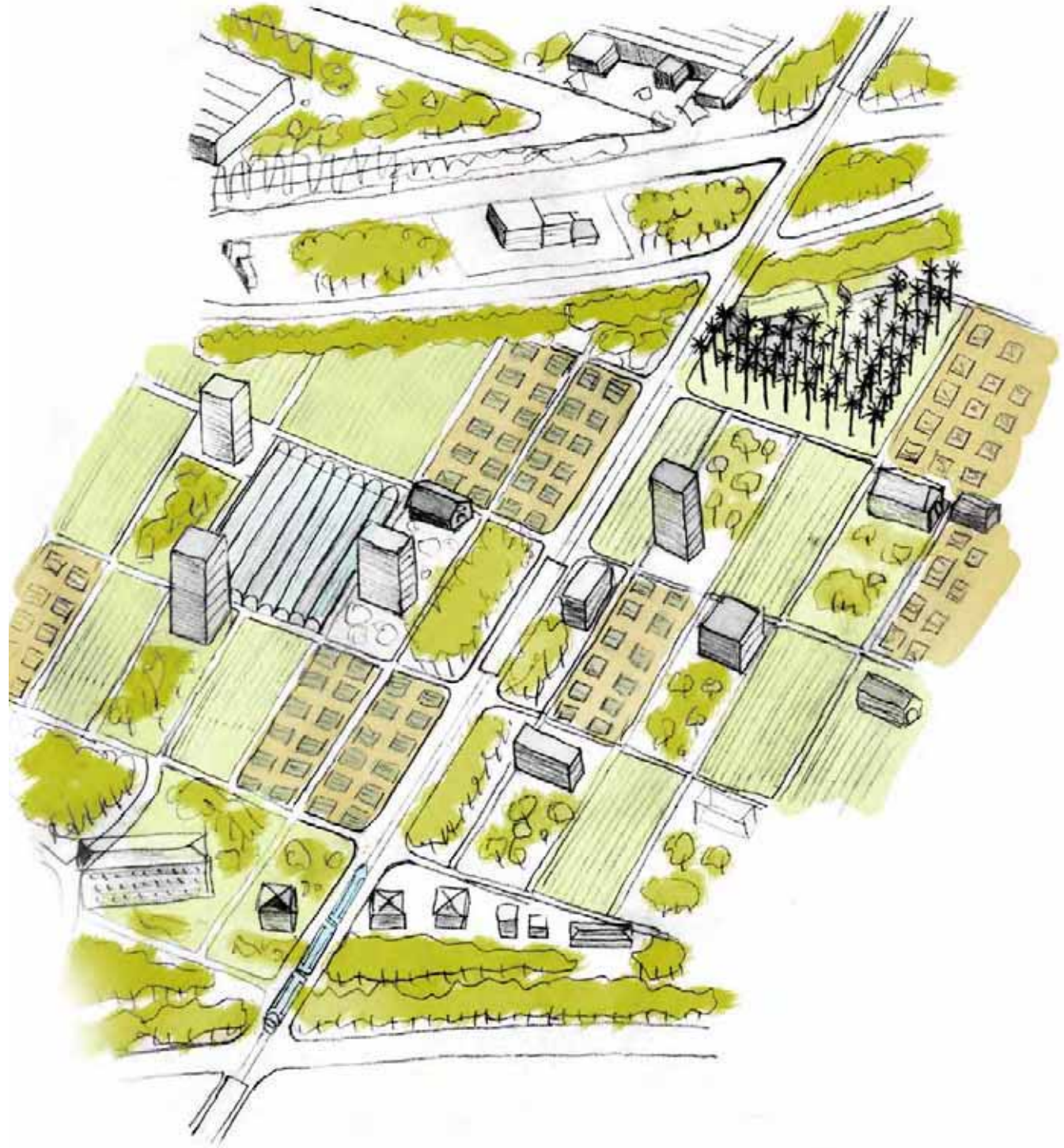






# 'WHEN THE CITY MEETS THE COUNTRYSIDE'

LOCATION:  
THE RAILWAY TERMINAL





# VISIONS



# VISIONS





# VISIONS

